



Climate Resiliency Forum

Tuesday, November 5th, 2024 – 4:00 PM – 5:30 PM
Region 1 Planning Council

AGENDA

1. Call to Order
2. Roll Call
3. Public Comment
4. Action Item: Approval of the September 24th, 2024 Meeting Minutes
5. Discussion Items:
 - a. Climate Action Plan – Update
 - b. Greenhouse Gas Emissions Inventory
 - c. Climate Resiliency Forum - Update
6. Staff Reports
7. Agency Reports
8. Other Business
9. Adjournment

Persons who require special accommodations under the Americans with Disabilities Act or persons who require translation services (free of charge) should contact R1 Planning at 815-319-4180 at least two working days before the need for such services or accommodations.



Climate Resiliency Forum

Tuesday, September 24th, 2024 – 4:00 PM – 5:30 PM
Region 1 Planning Council

1. **Call to Order**

The meeting was called to order at 4:02 pm.

2. **Roll Call**

Members Present: Amanda Mehl, Boone County Health Department; Colin Belle, City of Rockford Planning and Zoning; Mike Bacon, Climate Reality Project; Alan Branhagen, Natural Land Institute; Rebecca Olson, Olson Ecological Solutions; Tim Bragg, Rockford Park District; Brad Roos, Sustain Rockford; Jeff Bailey, West Gate Coalition; Todd Marshall, Winnebago County Health Department; Dennis Anthony, Winnebago County Soil & Water Conservation District

Staff Present: Clara Romeo, Chloe Barnes, Eric Tison, Estelle Adiaba, Jackson Sitter, Juliana Charlebois-Berg, Lauren Kleve, Nathan Larsen, Tim Verbeke, Vanessa Mauries

3. **Public Comment**

a. None

4. **Discussion: Climate Action Plan - Updates**

a. Lauren Kleve, R1 Environmental Planner, updated the forum on the status of the Climate Action Plan chapters and technical reports drafted for the plan. Ms. Kleve asked the agencies present if they would like to be noted as a potential partner next to relevant tactics within implementation matrix. This was then followed by Ms. Kleve highlighting the next steps of the plan.

5. **Discussion: Resilience Improvement Plan**

a. Tim Verbeke, Transportation Principal, presented the Resilience Improvement Plan to the forum. Mr. Verbeke shared the project scope, timeline, funding source, along with goals and projected outcomes of the plan. Members inquired about existing plans and funding sources.

6. **Discussion: Parking Reimagined – Strategies**



- a. Nathan Larsen, R1 Planner, gave a brief overview of the Parking Reimagined Plan and led an activity to discuss its goals and strategies. The activity focused on the plans goals relating to the environment, mobility, parking policy and pricing, parking retrofits, and placemaking. Mr. Larsen went through each goal and its related strategies, seeking feedback from the forum and providing explanations for any questions or terms that needed clarification.
7. **Action Item: Approval of the Meeting Minutes of July 23, 2024**
 - a. Motion by City of Rockford Planning and Zoning, Seconded by Sustain Rockford. Minutes Approved.
 8. **Staff Reports**
 - a. No staff reports.
 9. **Agency Reports**
 - a. Natural Land Institute has acquired 327 acres of natural land and plans to acquire more land along the Pecatonica River. Additionally, they are collaborating with Olson Ecological Solutions to pursue the Green Infrastructure Grant, aiming to transform an existing ditch into a natural swale.
 - b. Rockford Park District has confirmed the closure of the Elliot golf course property to Severson Dells, while also stating that the park district will maintain ownership of 50 acres.
 - c. Olson Ecological Solutions informed the forum that the EPA has announced funding opportunities for the Green Infrastructure Grant Program, which aims to address flooding. The application deadline is November 20th.
 - d. Sustain Rockford shared that the Illinois Environmental Council is actively addressing landfill issues related to methane emissions and solid waste diversion. In addition, Illinois has adjusted its approach to county permits for solar farm applications, and the Rock Cut solar farm has officially begun construction. Lastly, the steering committee of the GoSolar815 campaign will convene in early October to establish the campaign's goals and strategies.
 - e. Winnebago County Health Department provided an update on their progress with the Healthy Homes Grant application. They also discussed their anticipated success in providing private garbage collection services to people living outside the Rockford city limits.
 10. **Other Business**
 - a. No other business.



11. Adjournment

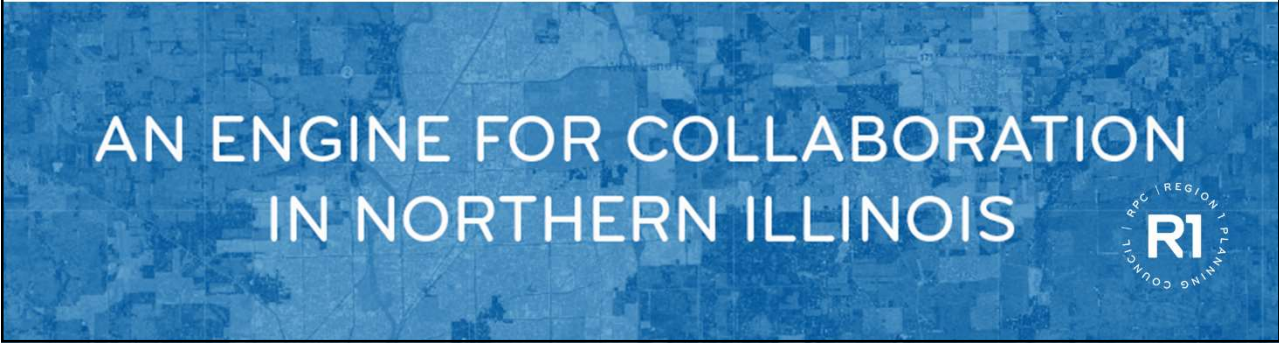
- a. Motion by Sustain Rockford, second by City of Rockford Planning and Zoning, to adjourn at 5:01 pm. Motion approved by a unanimous voice vote.

Meeting minutes prepared by: Vanessa Mauries

Minutes approved by action of the Forum:

Climate Action Plan: Update

CLIMATE RESILIENCY FORUM | 11/05/2024



CLIMATE ACTION PLAN ELEMENTS

The Plan

- Part 1. Introduction
- Part 2. About the Region
- Part 3. Trends & Impacts
- Part 4. Regional Assessment
- Part 5. Strategic Direction
- Part 6. Looking Ahead

Technical Reports

- GHG Emissions Inventory & Air Quality Assessment
- Vulnerability Assessment
- Social Determinants of Health
- SWOT Analysis
- Public & Stakeholder Engagement



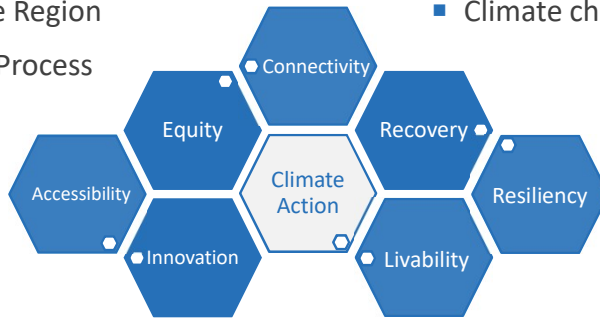
PART 1. INTRODUCTION

Chapter Contents

- Background and Purpose
- Global, Federal & State Guidance
- Planning in the Region
- Development Process

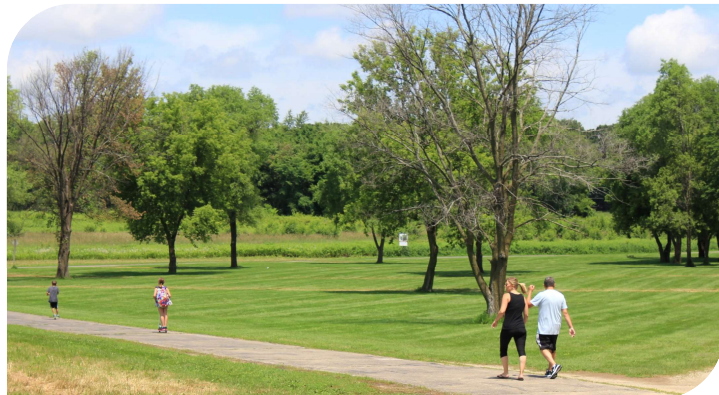
Key Highlights

- Adaptation vs. Mitigation
- Cross-cutting themes
- Climate change, equity, & justice



PART 2. ABOUT THE REGION

- Population
- Economy
- Housing
- Transportation
- Land Use
- Environment



PART 3. TRENDS & IMPACTS

Top Global Trends

- Sea Level Rise
- Extreme Heat
- Storm Severity
- Drought

Local Impacts of Climate Change

- Extreme Heat
- Storm Severity
- Flooding



Climate Sectors

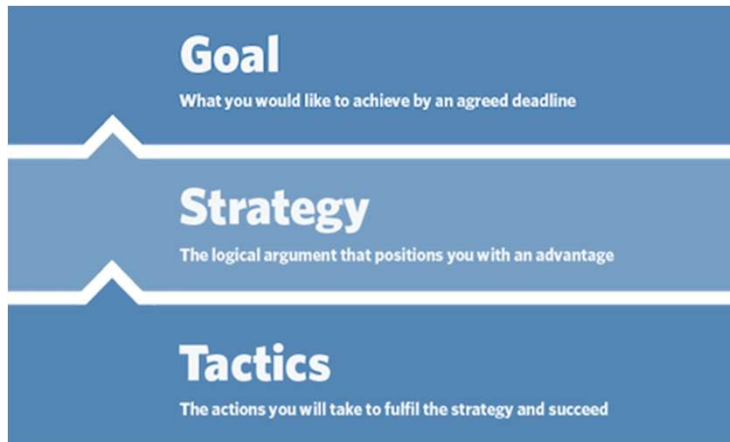


PART 4. REGIONAL ASSESSMENT

- Education & Outreach
- Land Development Patterns
- Transportation & Infrastructure
- Technology & Innovation
- Regulations & Policy
- Partnerships & Collaboration
- Funding



PART 5. STRATEGIC DIRECTION



Answers the following:

- Where do we want to go?
- How are we going to get there?
- How will we implement the plan?
- How did we do?



CLIMATE ACTION PLAN GOALS

1. Improve the region's **air quality** and reduce greenhouse gas emissions.
2. Promote strategic and climate-resilient development within the **built environment**.
3. Improve **energy** resilience by advancing clean energy and energy efficiency efforts.
4. Cultivate a conservation mindset to preserve, restore, and sustainably manage **natural and working lands**.
5. Promote sustainable **waste management** practices and technology.
6. Support **water** resource management.
7. Support **communities** and businesses in preparing for the effects of climate change.



PART 6. LOOKING FORWARD

- Implementation Considerations
 - Leadership & Collaboration
 - Resources & Funding
 - Community Engagement
- CAP Revisions & Updates



VULNERABILITY ASSESSMENT

Report Contents

- Background and Purpose
- Data Collection
 - Extreme heat
 - Flooding
- Results
 - Exposure
 - Sensitivity
 - Adaptive capacity

Key Findings

- Vulnerability indicators
- Concentrated vulnerability in Belvidere
- Urbanized areas have a higher vulnerability
- Rockford Region is more vulnerable to flooding than extreme heat



SOCIAL DETERMINANTS OF HEALTH

SDOH Objectives:

- Economic stability
- Education access and quality
- Healthcare access and quality
- Neighborhood and built environment
- Social and community context



SWOT ANALYSIS

- Built Environment & Neighborhoods
- Transportation & Infrastructure
- Innovation & Investment
- Energy
- Natural Resources & Climate
- Health & Equity



PUBLIC & STAKEHOLDER ENGAGEMENT

- Engagement Strategy
- Rounds of Engagement
 - Round 1. SWOT Analysis
 - Round 2. Strategies
 - Round 3. Public Comment



NEXT STEPS

- Public comment period
- Stay up-to-date on EngageR1!



PROJECT CONTACT

Lauren Kleve,
Environmental Planner
LKleve@R1planning.org



Greenhouse Gas Emissions Inventory

CLIMATE RESILIENCY FORUM | 11/05/2024



PROJECT PURPOSE

To quantify the total emissions of greenhouse gases produced in the region. This data is essential for identifying key sources of emissions, tracking progress toward reduction goals, and informing policy decisions.

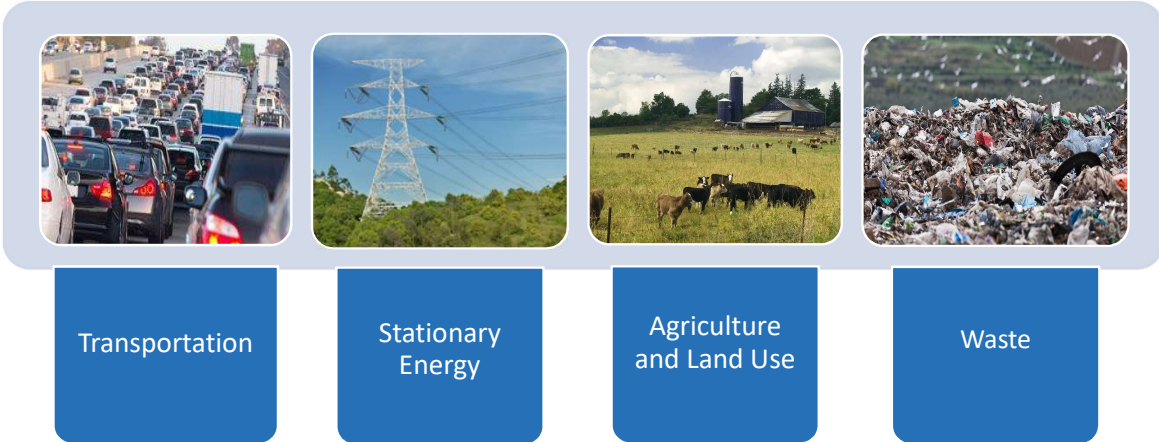
Carbon
Dioxide
CO₂

Methane
CH₄

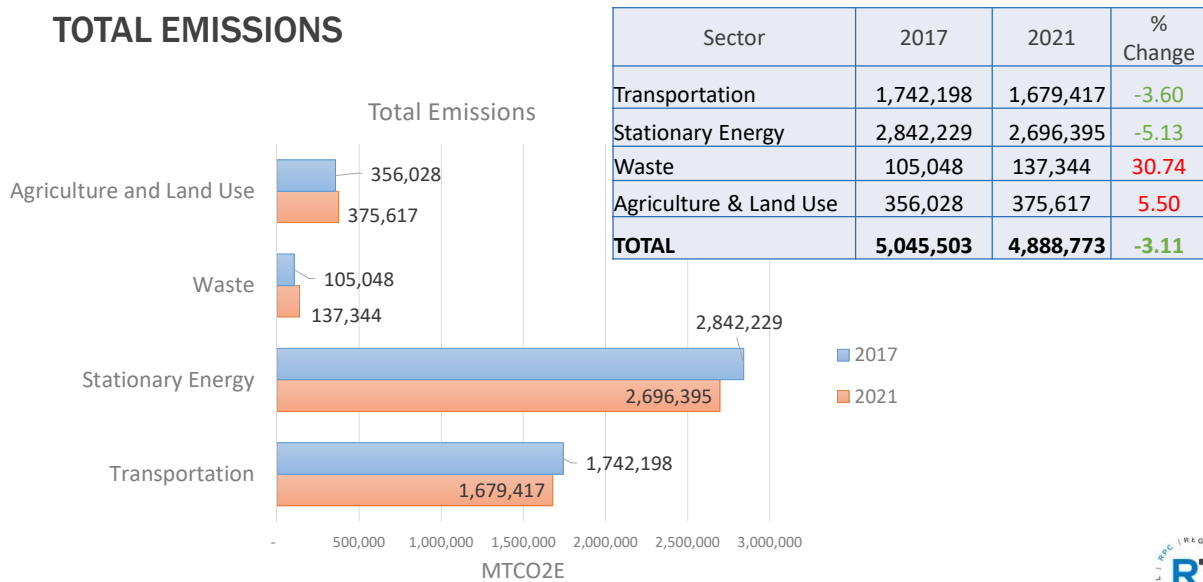
Nitrous
Oxide
N₂O



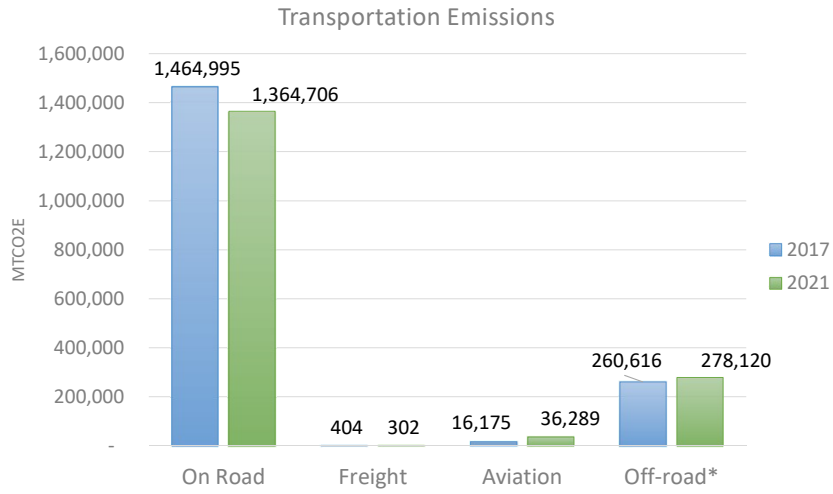
SECTORS



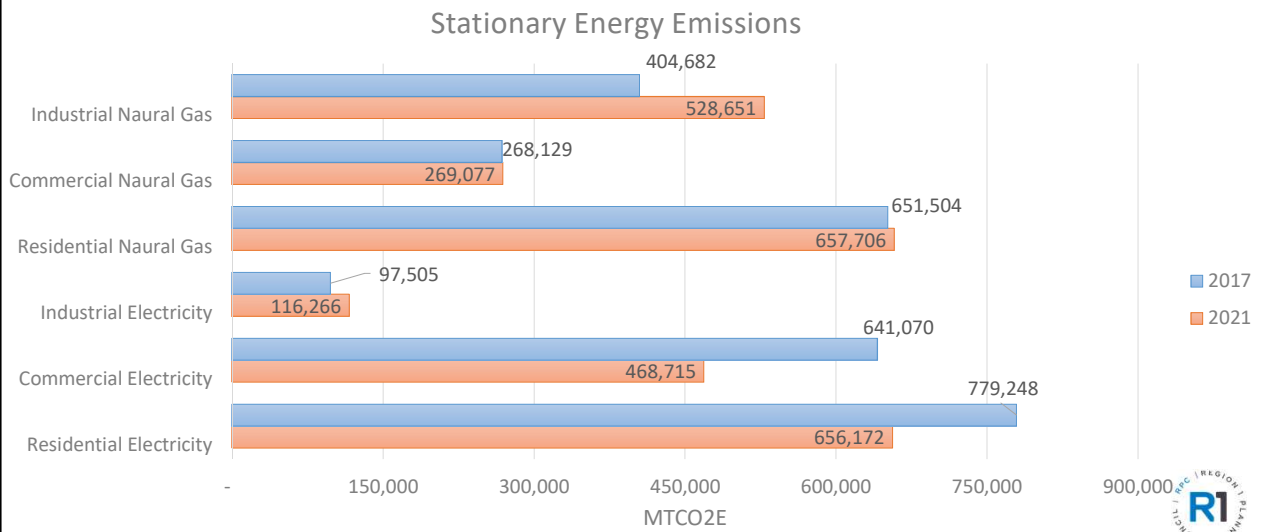
TOTAL EMISSIONS



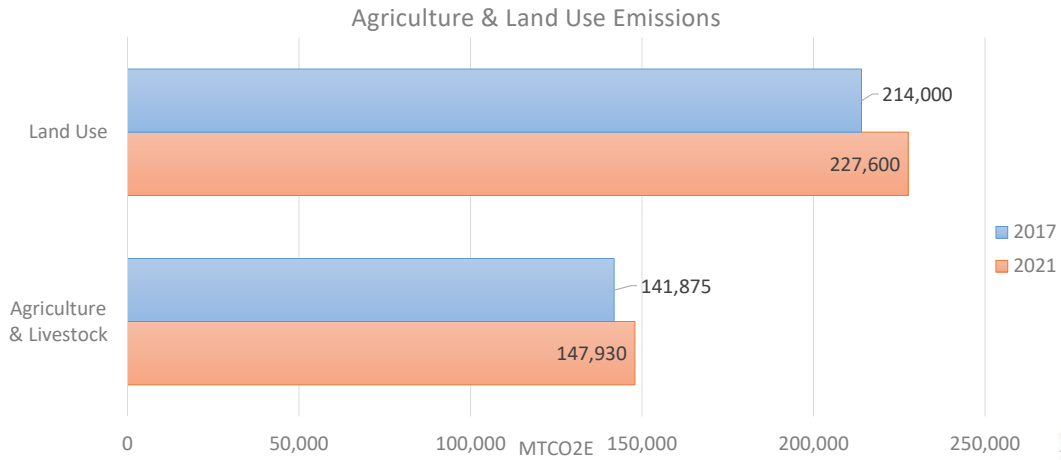
TRANSPORTATION



STATIONARY ENERGY



AGRICULTURE & LAND USE



WASTE

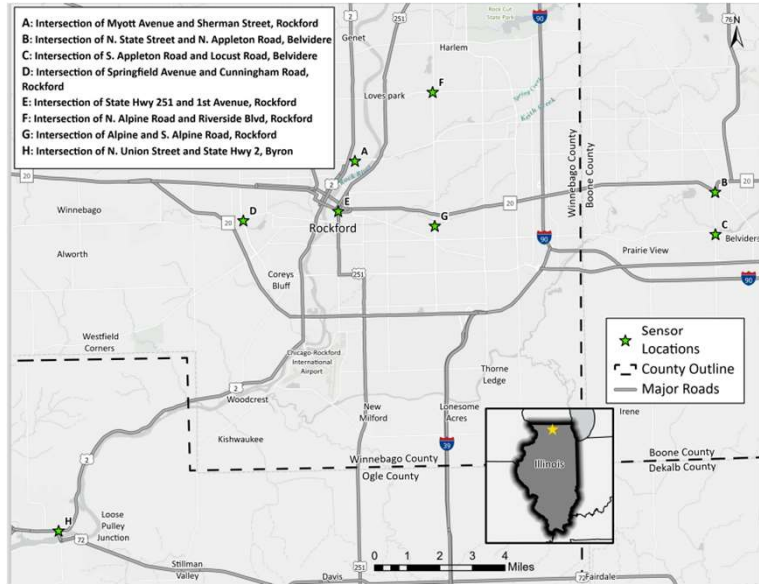


AIR QUALITY

8 AQ Mesh air sensors were installed and monitored from April – August 2024

National Ambient Air Quality Standard (NAAQS)

- Carbon Monoxide (CO)
- Nitrogen Dioxide (NO₂)
- Ozone (O₃)
- Particulate Matter 2.5
- Particulate Matter 10



Intersection of N. State Street and N. Appleton Road



PM 2.5 Annual NAAQS

Location: Belvidere

NAAQS Standard: 9

$\mu\text{g}/\text{m}^3$

Recorded Level: 10.5

$\mu\text{g}/\text{m}^3$



Intersection of Springfield Avenue and Cunningham Road

Ozone 8-Hour

NAAQS Standard: 0.07 ppm

Recorded Level: 0.076 ppm

PM 2.5 Annual

NAAQS Standard: 9 $\mu\text{g}/\text{m}^3$

Recorded Level: 11.7 $\mu\text{g}/\text{m}^3$

PM 2.5 24- Hourly

NAAQS Standard: 34 $\mu\text{g}/\text{m}^3$

Recorded Level: 44.8 $\mu\text{g}/\text{m}^3$



Intersection of State Hwy 251 and 1st Avenue



Nitrogen Dioxide

NAAQS Standard: 100 ppb

Recorded Level: 532.7 ppb





QUESTIONS?

CONTACT INFORMATION

Vanessa Mauries,
Sustainability Research Analyst
VMauries@R1planning.org

