

Amy Salamon

From: R1 Planning Council <info@r1planning.org>
Sent: Friday, March 7, 2025 1:30 PM
To: Amy Salamon
Subject: [Test] R1 March 2025 Newsletter - Climate Action Plan Needs Your Thoughts!

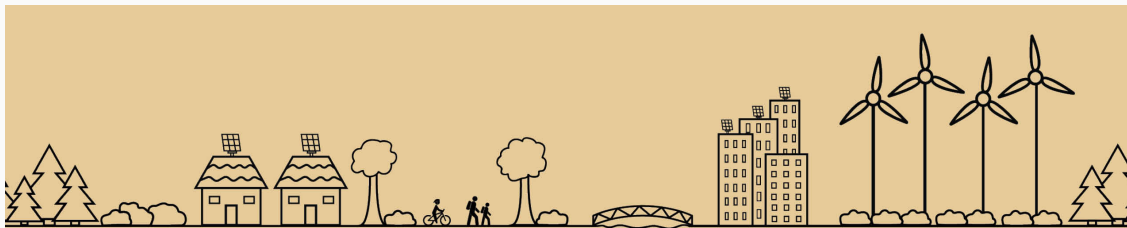
Warning: Unusual link

This message contains an unusual link, which may lead to a malicious site. Confirm the message is safe before clicking any links.



March 2025

Renewal. Resilience. Response.
First-ever Climate Action Plan Provides Regional Strategies to Address Climate Change



Climate change affects the way we live, work, and play in the Rockford region. But there is a roadmap to reducing its impact and it's ready for your input.

The Rockford Region's first Climate Action Plan (CAP) is now available for public comment. Community members can read the document and provide their insights on [Engage R1](#) from March 18 to April 22.

The CAP serves as a roadmap for Boone and Winnebago Counties to prepare for and mitigate the effects of climate change. The plan analyzes current and anticipated environmental impacts while centering quality of life for local communities. The CAP details strategies and implementation actions in the following areas:

1. Air quality
2. Built environment
3. Energy
4. Natural and working lands
5. Waste
6. Water
7. Community

"Climate change already has and will continue to impact communities in the Rockford region," says Lauren Kleve, R1 Environmental Planner and lead in CAP development. "This plan provides localized solutions to proactively mitigate and adapt to these risks affecting people's everyday lives."

The CAP is one of R1's three core planning documents, along with the Metropolitan Transportation Plan (MTP) and Comprehensive Economic Development Strategy (CEDS). These plans reflect regional priorities, determined by the public and stakeholders, and direct initiatives and funding the region will pursue in the coming years.



[Click on the survey title to participate](#)

 [Resilience Improvement Plan](#)

Open now

The Resilience Improvement Plan (RIP) will identify impacts to regional transportation caused by natural hazards like flooding, extreme temperatures, and severe storms. This survey is asking for the kinds, locations, and impacts of weather events that you experience.



[Regional Traffic Safety Action Plan](#)

Open now

The draft Regional Traffic Safety plan, covering metropolitan areas in Winnebago, Boone, and Ogle counties, is open for your feedback.



[Parking Reimagined](#)

Open March 12 through April 11

This plan lays out ways that regional parking can be safer, more versatile, and more sustainable. The completed draft will be open for your feedback.



[Climate Action Plan](#)

Open March 18 - April 22

One of R1's core plans, the Climate Action Plan (CAP) is a roadmap for the region to prepare for and respond to climate change. The completed draft will be open for your feedback.

PAID INTERNSHIP URBAN PLANNING

Apply now for a summer internship in charming downtown Rockford. R1 lets you customize your project to support your career goals.

Internships are available in these areas:

- Mental Health
- Community Impact
- Transportation
- Economic Development
- Government Administration



Submit your resume:

www.r1planning.org
Region 1 Planning Council



Is Your Town EV Friendly? R1 Can Help!



NATIONALLY DISTINGUISHED. LOCALLY POWERED.

Image: Interstate Renewable Energy Council

Electric vehicle (EV) registrations in Boone, McHenry, Ogle, Stephenson and Winnebago Counties increased 144 percent in February 2025. (That's 5,260 in February compared to 3,654 the previous year.)

R1 staff can help your city, village or county become more EV-friendly by helping you update building and zoning codes and plan for optimal deployment of EV charging stations.

Let R1 help you navigate the process and earn a 'Charging Smart' designation from the Interstate Renewable Energy Council. A Charging Smart badge signifies to the EV industry that your jurisdiction is EV-friendly and able to efficiently accommodate the deployment of EV charging stations. Updating your EV-related codes, policies and procedures is one way to show your commitment and attract business.

Email R1 Research Analyst Hailey Blanchard at hblanchard@r1planning.org to learn more or get started.

NorthCOG Event

Blueprints for Change:

Innovative Housing Strategies

DATE & TIME
Friday, April 11 12:00 - 1:00 PM

LOCATION
127 N Wyman St,
Rockford, IL 61101

MEET THE PANELISTS

- Conor Brown**
Chief Executive Officer
NorthWest Illinois Alliance of REALTORS®
- Oliver Emerson Jr.**
Chief Development Officer
Oliver Emerson Development
- Ron Clewer**
Illinois Market President
Gorman & Company

Join the Northern Illinois Council of Governments (NorthCOG) for a dynamic Lunch & Learn on how local governments and the private sector can expand housing options across Northern Illinois.

A panel of regional housing experts will discuss innovative strategies that bridge the gap to create inclusive, sustainable communities.

Site Readiness Grants Prep Region for Industrial Development

Northern Illinois received a package of site readiness grants in February, bringing an average \$3 million each to Winnebago, Boone, and McHenry Counties. Issued by the Illinois Department of Commerce and Economic Opportunity, these grants provide capital to bring road, water and sewer infrastructure to make industrial parks shovel-ready. This puts economic development organizations in a better position to market the region when scouting businesses to locate in the region.

The projects receiving funding are:

City of Rockford	\$2,500,000	Site: US20/IL-2 interchange
City of Belvidere	\$3,000,000	Site: I-90/Genoa Rd. interchange
City of Marengo	\$3,000,000	Site: I-90/IL-23 interchange
City of Harvard	\$150,000	Site: Dacy Airport
(environmental and feasibility planning)		

R1 Analyzes Rockford University's Economic Impact

Rockford University is dedicated to preparing students for prosperous careers. It's also a significant piece of the Rockford economy.

R1's recently released study, 2024 Rockford University Economic Impact Analysis, details the student return on investment and contributions the university makes to employment, population, and GDP in the region.

Read about R1's findings [here](#). R1 can harness its exhaustive data analysis savvy for your organization too! See the R1 website at <https://r1planning.org/data-services> for details on R1's customized data services and how they can work for you.



LOCAL ECONOMIC
IMPACT
\$133.5
MILLION



LIFETIME EARNINGS
19.1%
GREATER THAN HIGH
SCHOOL GRADUATE

**Employee
Spotlight**

REGIONAL PLANNING
COUNCIL OF RRPC

Cici Reed

Receptionist



Cici Reed joins R1 as an enthusiastic and friendly Receptionist. In addition to being the welcoming face of R1, they bring a graphic design background to the organization. A Rockford native, Cici is deeply committed to conservation, mental health, and LGBTQ+ advocacy, striving to make a positive impact in the community.

Copyright © 2025 R1 Planning Council, All rights reserved.

Our mailing address is:

127 N. Wyman St., Suite 101, Rockford, IL 61101

Want to change how you receive these emails?
You can [update your preferences](#) or [unsubscribe from this list](#).

