



Transportation Needs & Priorities

ENGAGEMENT SUMMARY REPORT
FOR THE 2050 METROPOLITAN
TRANSPORTATION PLAN

JUNE 27, 2019



Transportation Needs & Priorities

ENGAGEMENT SUMMARY REPORT

JUNE 27, 2019

THIS DOCUMENT HAS BEEN PREPARED BY THE REGION 1 PLANNING COUNCIL IN COLLABORATION WITH ITS MEMBER AGENCIES, PARTNERSHIP ORGANIZATIONS, AND LOCAL STAKEHOLDERS.

THIS REPORT WAS PREPARED IN COOPERATION WITH THE FOLLOWING:

U.S. Department of Transportation
Federal Highway Administration
Federal Transit Administration
Illinois Department of Transportation

THE CONTENTS, VIEWS, POLICIES AND CONCLUSIONS EXPRESSED IN THIS REPORT ARE NOT NECESSARILY THOSE OF THE ABOVE AGENCIES.



COLLABORATIVE PLANNING FOR NORTHERN ILLINOIS

313 North Main Street, Rockford, Illinois 61101

815-319-4180 | info@r1planning.org

For complaints, questions, or concerns about civil rights or nondiscrimination; or for special requests under the Americans with Disabilities Act, please contact: Jon Paul Dipla, Director of Metropolitan Planning Organization/MPO Title VI Coordinator at (815) 319-4180 or jpdiipla@r1planning.org.

MPO POLICY COMMITTEE

MAYOR GREG JURY, MPO Chair

City of Loves Park

CHAIRMAN CARL JOHNSON, MPO Vice-Chair

Boone County

MAYOR MIKE CHAMBERLAIN

City of Belvidere

MAYOR TOM MCNAMARA

City of Rockford

PRESIDENT STEVE JOHNSON

Village of Machesney Park

CHAIRMAN FRANK HANEY

Winnebago County

MASOOD AHMAD

IDOT - District 2

PASTOR HERBERT JOHNSON

Rockford Mass Transit District

MPO TECHNICAL COMMITTEE

VOTING MEMBERS

Belvidere Planning Department

Belvidere Public Works Department

Boone County Highway Department

Boone County Planning Department

Chicago / Rockford International Airport

Forest Preserves of Winnebago County

Illinois Department of Transportation – District 2

Loves Park Community Development Department

Loves Park Public Works Department

Machesney Park Community Development Department

Machesney Park Public Works Department

Rockford Public Works Department

Rockford Community Development Department

Rockford Mass Transit District

Winnebago County Planning & Economic Dev. Department

Winnebago County Highway Department

Rock River Water Reclamation District

Boone County Conservation District

Rockford Park District

Winnebago County Soil & Water Conservation District

NON-VOTING MEMBERS

Illinois Environmental Protection Agency

Illinois State Toll Highway Authority

IDOT, Division of Public & Intermodal Transportation

IDOT, Division of Urban Program Planning

Ogle County Highway Department

Boone County Council on Aging

State Line Area Transportation Study

Federal Highway Administration, IL Division

Stateline Mass Transit District

Region 1 Planning Council

Note: Membership at time of development.

CONTENTS

INTRODUCTION.....	1
STAKEHOLDER INTERVIEWS	4
PUBLIC WORKSHOPS.....	7
POP-UP OUTREACH	11
PUBLIC SURVEY.....	14
PRESENTATIONS.....	16
CONCLUSION	17
APPENDICES	
A Marketing Materials	19
B Media & Advertisements.....	22
C Stakeholder Interview Questionnaires	24
D Workshop Materials	28
E Presentation Agendas.....	43

LIST OF FIGURES

Figure 3.1 Results of Workshop Activity #4- Issues & Opportunities.....	10
Figure 5.1 Typical Commute Length.....	14

LIST OF TABLES

Table 2.1 Stakeholder Interview Participants	5
Table 3.1 Summary of Public Workshops	7
Table 3.2 Results of Workshop Activity #1 - Love/Change	8
Table 3.3 Results of Workshop Activity #2 - Priorities	9
Table 3.4 Results of Workshop Activity #3 - Mobility Bucks.....	10
Table 4.1 Summary of Pop-Up Outreach.....	11
Table 4.2 Results of Pop-Up Activity #1 - Love/Change.....	12
Table 4.3 Results of Pop-Up Activity #2 - Priorities	13
Table 5.1 Transportation Funding Allocations	15
Table 5.2 Project Selection Priorities.....	15

Introduction

Region 1 Planning Council (RPC), serving as the Rockford Metropolitan Planning Organization (MPO) launched a public engagement campaign in September 2018 to support the development of the 2050 Metropolitan Transportation Plan (MTP) for the Rockford region. The MTP is a comprehensive framework on how the region will manage and operate a multi-modal transportation network – encompassing highways, public transit, active transportation, and freight – to meet the region’s economic, transportation, and sustainability goals. Looking forward, the plan will provide a regional template to guide transportation investment, policies, and programming over the next twenty to thirty years.

Due to the nature of the MTP and its potential impact on the region, it is essential that public and stakeholders are included into the development process of the plan. The goal of the initial round of public and stakeholder engagement (Round 1: Transportation Needs and Priorities) was to gather public opinion on how the region should grow in the future, the existing gaps in the transportation network, the transportation needs of the community and stakeholders, the priorities of the region, and particularly investment priorities. The information collected will be used to frame the goals and objectives of the MTP as well as transportation priorities over the next 30 years. The MTP is a federally required transportation planning document and is updated every five years.

This report presents the strategy and results of the first round of engagement for the MTP. Future rounds of public engagement will similarly be presented and incorporated into the formally adopted plan.

PURPOSE

For the 2050 MTP update, it was identified early on that it was particularly important to be proactive in engaging stakeholders and the public. The input collected throughout the development process, particularly during the first two rounds of public engagement, would guide the direction of the plan. The initial round of public engagement was especially key in not only identifying the transportation needs and priorities but also educating the public on the current conditions of the transportation network and building a foundation for future public and stakeholder support for the final plan.

The MPO followed the four key strategies outlined the Public Participation Plan (PPP), adopted May 3, 2018, to ensure that sufficient opportunities for public participation was afforded in the MTP development process. Those key strategies are:

ENGAGE

Engage the public in the transportation planning process;

INFORM

Inform the public of transportation-related activities;

PROMOTE

Promote participation in the transportation planning process; and

IMPROVE

Improve public participation methods and techniques.

To meet those strategies, a variety of outreach techniques are typically used to proactively engage both the general population and stakeholders in the planning area. Selecting the most appropriate participation strategies and techniques was given great consideration.

APPROACH

Round 1 of the public engagement campaign for the 2050 MTP update used a variety of public engagement techniques and partnerships to attract public participation in the development of the plan and gather as much input as possible. Techniques included:

- Creation of a MTP webpage;
- Posting on the RPC social media accounts;
- Sending out press releases and legal advertisements;
- Distribution of a paper and web-based survey;
- Posting flyers to promote participation opportunities;
- Hosting several public workshops and pop-up booths;
- Presenting updates at the regularly scheduled MPO committee meetings; and
- Interviewing key stakeholders.

DISTRIBUTION & PROMOTION

The success of the initial round of the public engagement efforts was due largely to the extensive promotion and marketing techniques and strategies used by the MPO.

Websites

All information regarding the MTP public engagement efforts were posted on both the RPC and MPO websites, including press releases, workshop dates, and links to the web-based survey. Additionally, a MTP webpage was created on the Region 1 Planning Council's website, <http://r1planning.org/mtp>. This page will be continually updated throughout the entire development process of the MTP.

Flyers & Handouts

Several different forms of written materials were distributed to promote the first round of engagement efforts and encourage the public to participate in the MTP update. Flyers were distributed by MPO staff to over 160 locations within Boone, Winnebago, and Ogle counties. The MPO targeted distribution of these flyers to community gathering locations, such as libraries, community centers, and municipal-owned buildings, as well as to privately-owned establishments such as banks, cafes, and laundromats. In addition to larger flyers, the MPO designed smaller handouts to distribute at meetings and other community events the organization attended, such as career fairs.

Examples of these materials are provided in Appendix A.

Media & Advertising

To promote the survey and workshops, press releases and media advisories were sent out to local media outlets including newspapers, radio stations, and television stations. Some of notable media coverage included:

DECEMBER 18, 2018

Article: Rockford Chamber of Commerce's "Business Direct"

JANUARY 9, 2019

News Coverage: Channel 13 WREX News

JANUARY 14, 2019

Article: IGNITE Rockford's "Ignition Switch"

JANUARY 22, 2019

News Coverage: Channel 23 WIFR News

Additionally, a legal notice was published in the Rock River Times on December 19, 2019. The official Certificate of Publication can be found in Appendix B.

Social Media

Likewise, the RPC's various social media accounts were employed to promote and distribute information regarding the 2050 MTP update process, upcoming workshop and pop-up dates, and links to the web-based survey. Some notable results of social media posts include:

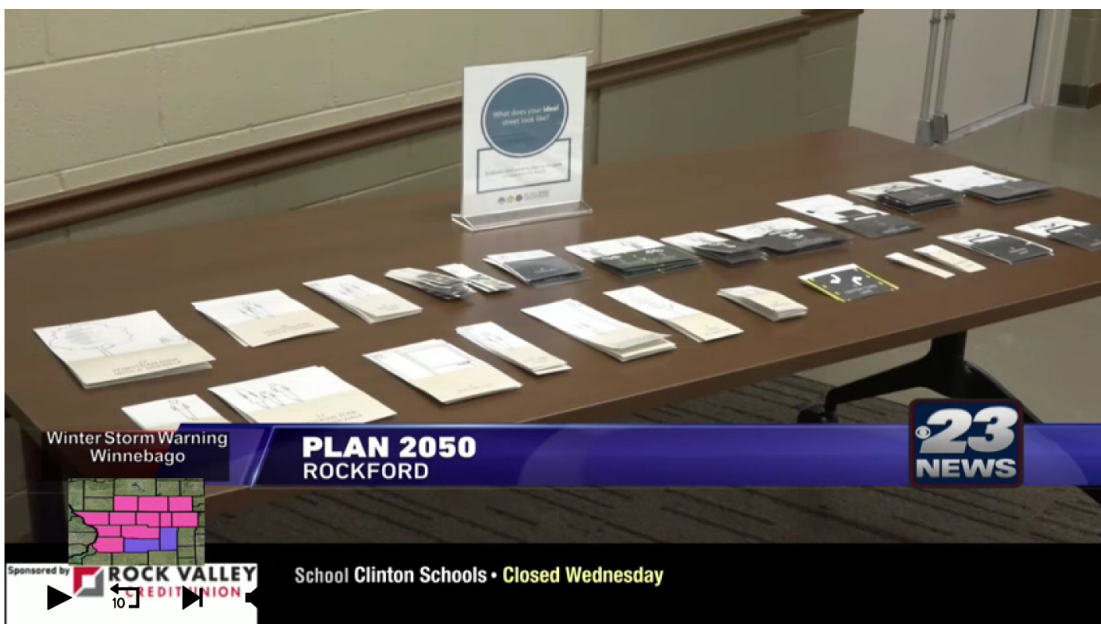
DECEMBER 22, 2018

Facebook Post: Reached 700+ people with 59 engagements.

JANUARY 10, 2019

Facebook Post: Reached 630+ people with 14 engagements.

Facebook posts were also shared by local business and government partners, including the Rockford Chamber of Commerce, Winnebago County Government, Rockford Mass Transit District, RAMP, and Ride Illinois.



Screenshot from Channel 23 News at 10 on January 22, 2019.

Stakeholder Interviews

Kick-off of the 2050 MTP public engagement campaign began in September 2018 with stakeholder interviews. The individuals selected for the interviews represented organizations that have a major stake in transportation and development in the Rockford region. The primary purpose of these interviews was to discuss the perceived transportation issues in the region over the next 30 years and how best to address those current and anticipated transportation issues.

More than 25 individuals representing 15 transportation and service organizations were invited to participate in the stakeholder interviews. Using stakeholder interview questionnaires as a guide, the MPO conducted face-to-face interviews from September 2018 to March 2019. A request was made to complete the stakeholder questionnaire in cases where individuals were unable to meet with RPC staff. A list of stakeholder interview participants is provided in Table 2.1.

Two versions of the stakeholder questionnaires were developed. The first questionnaire was developed for agencies with transportation projects identified in the current metropolitan transportation plan, known as the Transportation for Tomorrow (2040): A Long Range Transportation Plan for the Rockford Region (adopted on July 30th, 2015). A second questionnaire was developed for organizations with a major stake in transportation in the Rockford region but did not have projects specifically identified in the current document. Both questionnaires focused on land use development/growth management, known transportation issues, the strengths and weaknesses in current system, improvement priorities, and investment prioritization.

Below are some of the questions that were discussed at the stakeholder interviews. Both hardcopies and electronic copies of the questionnaires were made available. Full versions of the stakeholder questionnaires can be found in Appendix C.

- What transportation issues concern you the most with respect to your community or organization?
- How have the transportation needs of your community or organization changed over the last five to ten years?
- What are the strengths of the Rockford Region's existing transportation system?
- What are the weaknesses of the Rockford Region's existing transportation system?
- As a region, what are the biggest issues/problems our transportation system is currently facing? Over the next five to ten years? Over the next 20 years?
- What do you think about technology as a potential solution to transportation needs (i.e. traffic management system, coordinating traffic signals, connected vehicles)? What types of technology should be considered?
- What are your impressions of the bicycle and pedestrian facilities within the region?
- Are there particular corridors or areas that need transportation improvements?
- What other issues/factors do we need to take into consideration in the long range transportation plan?

Table 2.1: Stakeholder Interview Participants

Masood Ahmad , <i>Region 2 Engineer</i> IDOT Region 2	Dennis Henricks , <i>Operations Manager</i> Rockford Mass Transit District*
Brent Anderson , <i>Director of Public Works</i> City of Belvidere	Frank Hodina , <i>Engineering Manager</i> Winnebago County
Chris Baer , <i>Engineering Manager</i> Rock River Water Reclamation District	Paula Hughes , <i>DBE/Grant Management</i> Rockford Mass Transit District*
Robert Bates , <i>Systems Engineer</i> IDOT District 2	Justin Krohn , <i>County Engineer</i> Boone County
Tim Bragg , <i>Park Planner</i> Rockford Park District	Kevin Marchek , <i>Region 2 Engineer (Retired)</i> IDOT District 2
Lisa Brown , <i>Marketing and Public Relations Specialist</i> Rockford Mass Transit District*	Zack Oakley , <i>Deputy Director of Operations</i> Chicago Rockford International Airport
Nathan Bruck , <i>Economic Development & Planning Manager</i> City of Loves Park	James Richter II , <i>Community Development Director</i> Village of Machesney Park
Scott Capovilla , <i>Zoning & Land Use Administrator</i> City of Rockford	Tim Savage , <i>Village Administrator</i> Village of Machesney Park
Jeremy Carter , <i>City Traffic Engineer</i> City of Rockford	Ashley Spohr , <i>Planner</i> Winnebago County
Jeremy Ciesiel , <i>County Engineer</i> Ogle County	Daniel Streed , <i>Deputy County Manager</i> Boone County
Dwayne Collins , <i>PCOM</i> Boone County*	Michael Stubbe , <i>Executive Director</i> Rockford Mass Transit District
Doug DeLille , <i>Metropolitan Planning Manager</i> IDOT	Ken Terrinoni , <i>County Administrator</i> Boone County
Gina Delrose , <i>Community Development Planner</i> City of Belvidere	Steve Thompson , <i>Director of Community Development</i> City of Loves Park
Melaney Dembicky , <i>Transportation Supervisor</i> Boone County Council on Aging*	Kris Tobin , <i>Programming Engineer</i> IDOT District 2
Joe Fortmann , <i>Executive Director</i> Boone County Council on Aging*	Joe Vanderwerff , <i>County Engineer</i> Winnebago County
Tim Hanson , <i>District Director</i> Rock River Water Reclamation District	

KEY THEME SUMMARY

The following section provides a summary of key themes that emerged from the interviews.

Growth/Development

- The majority of stakeholders indicated support for focusing on infill development within the urban areas of the region as well as redevelopment of the town centers and key commercial corridors.
- In addition to infill development and redevelopment, several stakeholders indicated economic development should also be considered in future development patterns. Of particular note, stakeholders identified land directly adjacent to Interstate 90, Interstate 39, and US Route 20. Stakeholders also shown interest in directing commercial/industrial growth around the Chicago Rockford International Airport.
- Stakeholders provided general comments that new growth will occur as correlated

to annexation and/or boundary agreements between the municipalities.

- Stakeholders also indicated general support for the creation of a strategically located transload and trucking distribution hub within the region.

Maintaining the System

- Stakeholders noted that the major area of concern for the region's transportation network is the condition of infrastructure, in particular the age of the region's bridges, roadways, and utilities.
- Stakeholders noted general support for the development of a regional asset management program.
- Stakeholders indicated that there is a strong jurisdictional focus on reconstruction and resurfacing projects as well as identified several preservation techniques and strategies that will expand life cycle and decrease costs.
- Another suggestion made by stakeholders to expand the life of the roadways is to increase existing roadway and bridge infrastructure to higher weight limits (80,000 or 120,000 pounds), particularly along designated truck routes.
- Some participants suggested the connections between existing and future major warehousing hubs at the Baxter/Interstate 39 interchange to the Chicago Rockford International Airport need to continue to be maintained in a state of good repair to ensure efficient freight movement.
- Some stakeholders noted general concern regarding signal timing coordination. Many transportation agencies are considering the incorporation of technological advancements as a component of infrastructure and capital replacements to improve signal timing coordination, however maintaining the existing roadways and bridge structures remain the primary priority for investments.

Funding

- A major challenge to maintaining and improving the current multi-modal transportation system, including addressing the known gaps of public transportation, bicycle and pedestrian facilities, is limited available funding.
- Stakeholders expressed concerns with the distribution mechanisms for transportation funds, especially motor fuel taxes (MFT) at the state- and federal-levels.
- Partnerships and innovative transportation funding strategies (i.e. between government agencies and P3s, etc.) were several suggestions made by stakeholders to address funding concerns within the region.

System Connectivity

- Stakeholders noted that the importance of considering the construction of additional north-south roads to connect key east-west corridors, specifically in the eastern portion of Winnebago County and central Boone County.
- Stakeholders agreed that an emphasis should be placed on the construction of new sidewalks and reduce the number of gaps within existing pedestrian facilities, particularly along public transit bus routes to improve access to and from bus stops.
- Some stakeholders also provided feedback on expanding transit services to the airport to address the workforce needs of the industries located at the Chicago Rockford International Airport and the surrounding manufacturing companies.
- Stakeholders noted support for closing gaps in the current bicycle and shared-use path network.
- Stakeholders provided positive feedback on the ability of residents to access neighborhood parks but suggested that maintaining access to both neighborhood and regional parks should continue to be a priority.

Public Workshops

The MPO hosted five community workshops in the early months 2019 to gather public input of the region’s transportation needs and priorities. The workshops were held to present the current conditions of the transportation network and to gather input on the current transportation needs and future transportation investments. MPO staff was available at the workshops to speak with attendees one-on-one, if requested. Comment cards were also made available at the meetings. Although the workshops were well advertised, public turnout was low, largely due to severe weather experienced in the region. A summary of the workshops can be found in Table 3.1.

At the community workshops, attendees were encouraged to review and provide feedback on several informational boards, each covering one of the main topic areas within the MTP. These topic areas included: highways and streets, public transportation, management and operations, economic development, demographics, and active transportation. In addition to the informational boards, the MPO offered attendees the opportunity to participate in a variety of activities.

Table 3.1: Summary of Public Workshops

Location	Date/Location	Attendance
Regional Design Center, 315 N. Main Street, Rockford, IL	January 24, 2019 3:00 p.m. to 6:00 p.m.	10 people
RMTD East Side Transfer Center, 725 N. Lyford Road, Rockford, IL	January 29,2019 10:30 a.m. to 1:30 p.m.	5 people
Belvidere Family YMCA, 220 W. Locust Street, Belvidere, IL	January 31, 2019 6:30 p.m. to 8:00 p.m.	2 people
North Suburban Library, 6340 N. Second Street, Loves Park, IL	February 12, 2019 4:00 p.m. to 6:30 p.m.	No attendance
Machesney Park Village Hall, 300 Roosevelt Road, Machesney Park, IL	February 21, 2019 2:00 p.m. to 4:30 p.m.	No attendance

SUMMARY OF THE WORKSHOP ACTIVITIES

Workshop Activity 1: Love/Change

Participants were asked to write down things that they love most about transportation in the Rockford region and the things they would most like to change about transportation in the Rockford region.

Table 3.2: Results of Workshop Activity #1 - Love/Change



WHAT DO YOU LOVE MOST ABOUT TRANSPORTATION IN THE ROCKFORD REGION?

- Art and landscape*
- Art and planters*
- Roundabouts*
- Public Art*
- Metro patrol*
- Bike lanes*
- [Public transit] always available, despite weather*
- 3-4 lane roads are good and the wider 2 lane roads.*



WHAT WOULD YOU CHANGE ABOUT TRANSPORTATION IN THE ROCKFORD REGION?

- Add more electric charging stations*
- Proterra electric buses*
- Bike routes should be away from cars or at least a 1/2 wall, if busy*
- Flashing yellow lights longer to indicate signal change from green to red.*
- More truck parking*
- Make toll bridges wider*
- Sync stoplights on Perryville*
- Merdian's*
- RMTD's schedule book*
- Increase safe bike and pedestrian paths*
- Safety for drivers and patrons [on public transit]*
- Time schedules*
- Private transportation for residential streets*
- A lot!*

Workshop Activity 2: Priorities

Participants were invited to review descriptions of nine priorities and choose their top three considerations onto a board. The descriptions for the priorities were intentionally written to be broad so that participants could interpret each how they wanted to. Participants were provided the following priorities and descriptions:

BOOST ECONOMIC VITALITY

Focus on investments that support trade, employment, and productivity;

ENHANCE SAFETY

Making roads, bridges, transit system, sidewalk, and bike paths safer for through improved designs and increased enforcement;

EXPAND TECHNOLOGY

Implementing technology to improve safety and efficiency of traffic operations;

EXPAND TRAVEL OPTIONS

Provide more alternatives for people to travel to jobs, services, and other opportunities;

INCREASE CAPACITY

Improving the movement of goods and people through widening of existing roads and/or building new roads;

INCREASE CONNECTIVITY

Creating a multimodal, interconnected system - connecting bikeways, pedestrian facilities, transit services, and roadways;

IMPROVE EFFICIENCY

Make travel more efficient and reliable for moving people and goods;

MAINTAIN THE SYSTEM

Keep the current transportation system in good repair to extend the life of our investments; and

PROTECT THE ENVIRONMENT

Promote transportation projects that help reduce air and water pollution and minimize impacts on natural areas.

Table 3.3: Results of Workshop Activity #2 - Priorities

Priority	Rank	Votes
Maintain the System	1	9
Enhance Safety	2	5
Increase Connectivity	2	5
Improve Efficiency	2	5
Protect the Environment	2	5
Expand Technology	6	3
Boost Economic Vitality	7	2
Increase Capacity	7	2
Expand Travel Options	9	1

Table 3.3 shows the overall rankings of the priorities from all five of the workshops.

Workshop Activity 3: Mobility Bucks

Participants were each asked to distribute \$100 of fictional funding dollars, known as “mobility bucks”, (in increments of \$20) amongst various types of transportation projects. The project types included: bicycle facilities, bus service, intersections, maintenance, new roads, new technology, pedestrian facilities, roadway capacity, roadway safety, streetscapes, and traffic calming.

Table 3.4 shows the overall rankings of the allocation of the “mobility bucks” from all five of the workshops.

Workshop Activity 4: Issues & Opportunities

Large aerial maps of the Rockford region were laid on tables and participants were asked to identify areas with the greatest transportation-related issues. Participants could place up to four dots on the map, each one color-coded to represent the following types of issues:

- Safety issues (red);
- Bicycle or pedestrian-related issues (yellow);
- Congestion or intersection-related issues (blue); and
- Access issues, such as access to jobs and/or schools (green).

All of the resulting maps can be found in Appendix D.

Workshop Activity 5: Ideal Street Design

Participants were also invited to create their ideal street. This activity is based on Streetmix, an open source tool that allows individuals to design streets within a set right-of-way. The goal of the activity was to educate participants on the various components and requirements that go into planning a street, as well as how certain street elements can impact the community. Both residential and commercial street were available for participants to design.

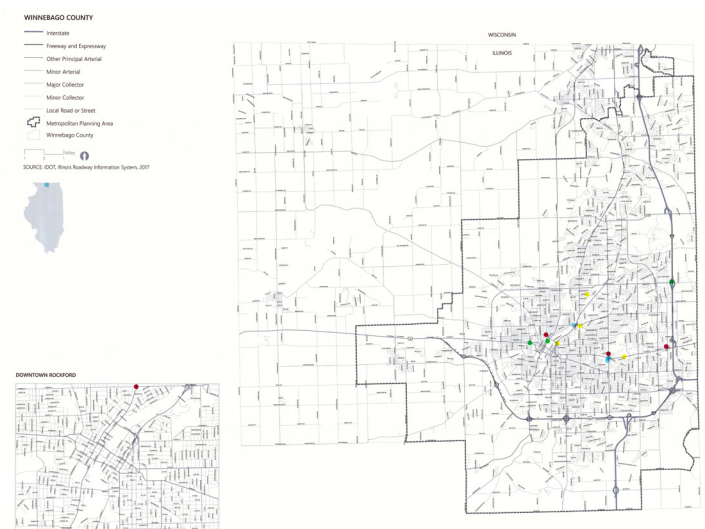
Streetmix can be accessed at <https://streetmix.net/>.

Photographs of the “ideal” streets can be found in Appendix D.

**Table 3.4: Results of Workshop Activity #3
- Mobility Bucks**

Project Type	Sum	Average
Bicycle Facilities	\$320	\$107
Pedestrian Facilities	\$180	\$90
Intersections	\$160	\$53
Maintenance	\$160	\$53
New Technology	\$120	\$60
Roadway Safety	\$80	\$40
Traffic Calming	\$80	\$40
Bus Service	\$60	\$30
Streescapes	\$40	\$20
New Roads	\$20	\$10
Roadway Capacity	\$20	\$10

**Figure 3.1: Results of Workshop Activity #4
- Issues & Opportunities**



Pop-Up Outreach

Pop-up outreach efforts occurred during February 2019. These events provided additional opportunities for the MPO to engage a large number of individuals in an informal setting. The MPO identified specific locations and times that would allow the MPO to reach a wide range of citizens of different ages and backgrounds.

In addition to providing information about the MTP development process, MPO staff collected input in four different ways from members of the public: the paper version of Transportation Needs and Priorities survey, comment cards, a Love/Change sheet, and a board to identify their highest priorities for transportation-related projects.

SUMMARY OF POP-UP OUTREACH ACTIVITIES

Pop-up Outreach Activity 1: Love/Change

Similar to the Workshop Activity 1: Love/Change, participants were provided a sheet of paper and asked to write down things that they love most about transportation in the Rockford region and the things they would most like to change about transportation in the Rockford region. Some of the comments are listed in Table 4.2.

Table 4.1: Summary of Pop-Up Outreach

Location	Date/Location	Interactions
YWCA Northwestern Illinois, 4990 E. State Street, Rockford, IL	February 4, 2019 8:00 a.m. - 10:00 a.m.	4
SwedishAmerican Riverfront YMCA, 200 Y Boulevard, Rockford, IL	February 4, 2019 4:30 p.m. - 6:30 p.m.	14
Belvidere Family YMCA, 220 W. Locust Street, Belvidere, IL	February 6, 2019 10:00 a.m. - 12:00 p.m.	2
Veterans Memorial Hall, 211 N. Main Street, Rockford, IL	February 7, 2019 11:30 a.m. - 1:30 p.m.	15
Giovanni's - Passenger Rail Forum, 610 N. Bell School Road, Rockford, IL	February 8, 2019 3:30 p.m. - 4:30 p.m.	35
YWCA Northwestern Illinois, 4990 E. State Street, Rockford, IL	February 11, 2019 1:00 p.m. - 3:00 p.m.	3
MercyHealth Sportscore 2, 8800 E. Riverside Boulevard, Loves Park, IL	February 13, 2019 5:00 p.m. - 7:00 p.m.	15
Rock Valley College - Student Center, 3301 N. Mulford Road, Rockford, IL	February 20, 2019 11:30 a.m. - 1:00 p.m.	18
Rock Valley College - Resource Center, 3301 N. Mulford Road, Rockford, IL	February 20, 2019 11:30 a.m. - 1:00 p.m.	2

Table 4.2: Results of Pop-Up Activity #1 - Love/Change



WHAT DO YOU LOVE MOST ABOUT TRANSPORTATION IN THE ROCKFORD REGION?



WHAT WOULD YOU CHANGE ABOUT TRANSPORTATION IN THE ROCKFORD REGION?

I love that transportation is available. I also love that the Rockford Region is out in the community trying to gain feedback from people who live, work, and travel in the community daily.

Gets you where you need to go

I find it fairly easily to get around the city.

Keen Center helps teens come to YMCA

I loves that the mass transit district is on the main drag and runs regularly.

There are various options

Always on time and safe

RMTD - Great Job!!

I would love to see a passenger train

Prevalence of multi-use paths

Paratransit and bus options

More bus routes that provide people the opportunity to find employment...24 hour routes. Less travel time. More availability.

Public transportation. # of Routes. Road Repair.

I live off of Spring Creek. There are no bus stops along the way and sidewalks would be nice also. Not a bike path, sidewalks!

Better roads - less potholes in new blacktop

Fix the roads

More buses to grocery in belvidere, older people and less fortunate cannot get to grocery store

Would love other options for transportation other than greyhound; Chicago to Rockford train is a bad idea.

Traffic at certain intersections at key times of day.

More buses and ways to get around

Upkeep/quality of buses

Trains to Chicago and other cities

Add passenger rail; increase bus frequencies

Enclosures at Bus stops or covering for the benches

Maintenance

Paratransit is inconvenient and had to schedule

Pop-Up Outreach Activity 2: Priorities

Similar to the workshops, participants were invited to review descriptions of nine priorities and choose their top three considerations onto a board. The descriptions for each of the priorities were intentionally written to be broad so that participants could interpret each how they wanted to. A full list of the priorities and descriptions provided to participants is summarized on page 9. Table 4.3 shows the overall rankings of the priorities from all of the pop-up outreach efforts.

Table 4.3: Results of Pop-Up Activity #2 - Priorities

Priority	Overall Rank	Votes
Maintain the System	1	20
Expand Travel Options	2	19
Enhance Safety	3	17
Increase Connectivity	3	17
Boost Economic Vitality	3	17
Improve Efficiency	6	11
Protect the Environment	6	11
Increase Capacity	8	3
Expand Technology	9	2

Public Surveys

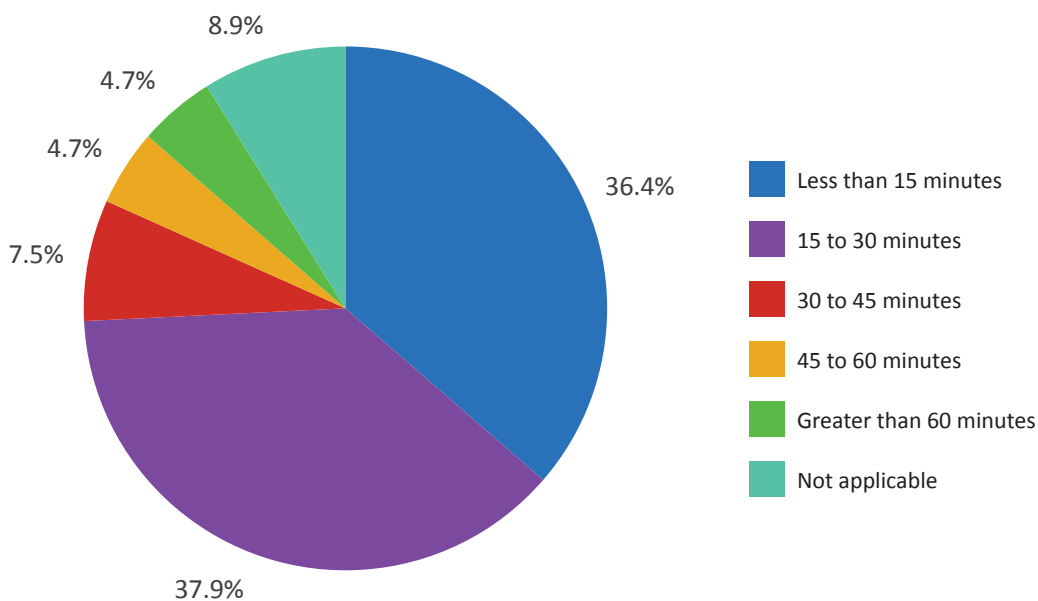
In order to supplement the in-person engagement activities, the MPO also deployed a survey. The survey was conducted online and in-person from December 10, 2018 until March 15, 2019. The survey targeted residents and employees of Boone, Ogle, and Winnebago counties. A total of 237 respondents participated in the survey. Additionally, a Spanish version of the survey was made available.

In total, participants were asked 22 questions. The questions were designed to evaluate the public's views on the current transportation network, future transportation funding and priorities, and land use development. Generally, the type of questions used were multiple choice and rating scales. Demographic information was also collected.

Below is a summary of the key findings.

- Automobile is the primary mode of transportation for most of the population who works or resides in the region, with 95% of respondents reporting that they drive a personal vehicle frequently.
- The typical commute to work or school for the majority of individuals within the region is less than 30 minutes (74%), with 36% having less than a 15-minute commute typically. Shown in Figure 5.1.

Figure 5.1. Typical Commute Length



- The biggest challenges are the maintenance of the transportation system (46%); access to quality jobs & education opportunities (44%), and the lack of alternative transportation options (36%).
- Respondents reported that the most acceptable potential funding mechanisms is one time fees on new developments (53%), while the least acceptable funding mechanisms are property taxes (70%) or a fee based on vehicle miles traveled.
- When asked to allocate funds to different transportation projects, on average respondents spent the most money, \$33.50, on replacing or upgrading aging facilities (see Table 5.1).
- Enhancing safety is ranked as the highest priority for transportation project selections, followed closely by maintaining the system and increasing connectivity (shown in Table 5.2).
- Reinvesting and redeveloping high density areas, such as downtowns and major corridors (51%) was the respondents preferred method of managing future growth and development.

A full summary on the results of the Transportation Needs and Priorities Survey can be found at r1planning.org.

Table 5.1: Transportation Funding Allocations

Priority	Average Allocated
Replace/upgrade aging facilities	\$33.50
Improve/add bus service	\$29.10
Other	\$27.70
Construct new bike lanes and trails	\$18.30
Improve roadway safety	\$17.30
Improve walking conditions	\$17.30
Build new roadways	\$16.10
Improve intersections	\$15.40
Improve street appearance	\$15.10
Implement new transportation technologies	\$14.80
Improve roadway operations	\$14.30
Add lanes to existing roadways	\$13.90
Implement traffic calming measures	\$11.00

Table 5.2: Project Selection Priorities

Priority	Overall Rank	# of Rankings
Enhance Safety	1	188
Maintain the System	2	194
Increase Connectivity	3	187
Boost Economic Vitality	4	185
Expand Travel Options	5	185
Protect the Environment	6	195
Improve Efficiency	7	186
Expand Technology	8	183
Increase Capacity	9	183

Presentations

In addition to the above mentioned engagement efforts, MPO staff presents progress reports for the Metropolitan Transportation Plan regularly at the MPO's committee meetings. The MTP has been a standing agenda item on the MPO Technical and Policy Committee beginning in June 2018, as well as the MPO's Alternative Transportation Committee since October 2018. Open discussion is afforded on any transportation-related matter at these committee meetings and detailed meeting minutes are posted so that further discussion may occur, as needed.

Additionally, the MPO presented at the February 28, 2019 Environmental Committee meeting of Region 1 Planning Council. Members of the committee were able to view informational boards from the workshops, as well as participate in the pop-up booth activities.

Below is a list of the dates of the MTP presentations and/or progress reports:

MPO TECHNICAL COMMITTEE

June 21, 2018
August 16, 2018
October 18, 2018
January 17, 2019
February 21, 2019
April 18, 2019
June 20, 2019

MPO POLICY COMMITTEE

June 28, 2018
December 13, 2018
February 28, 2019
May 9, 2019
June 27, 2019

ALTERNATIVE TRANSPORTATION COMMITTEE

October 9, 2018
January 8, 2019
April 9, 2019

REGION 1 JOINT PLANNING COMMISSION

December 13, 2018
June 27, 2019

ENVIRONMENTAL COMMITTEE

February 28, 2019

Conclusion

The input collected through the first round of public engagement, along with feedback from the MPO's Alternative Transportation, Technical and Policy Committees, will be utilized in the development of the plan's vision and goals. Additionally, the input received will help the MPO further assess potential transportation projects as well as guide possible regional transportation and land-use development policies. The input collected will also further the analysis of operational and maintenance needs of the region's transportation network. The MPO also utilized the input from the first round of public engagement to develop potential scenarios for the future of the region.

NEXT STEPS

In coordination with the release of the regional scenario planning process, the MPO will launch the second round of public engagement in mid-2019. Round 2 of engagement will be focused around gathering feedback on the proposed scenarios. Participants will be asked to review each of the scenarios and consider how each would meet the goals of the MTP and whether or not the presented scenarios align with their transportation preferences. The feedback will then be used to create a preferred scenario for the region.

Below is the tentative schedule and next steps in the MTP planning process:

LATE SPRING TO EARLY SUMMER 2019

Draft the goals for the MTP and develop potential scenarios;

LATE SUMMER 2019

Host second round of public engagement focused on the evaluation of the proposed goals and scenarios;

SUMMER 2019 TO SPRING 2020

Draft the 2050 Metropolitan Transportation Plan; and

SPRING 2020

Begin the plan's adoption process, including the third and final round of public engagement.

Appendices

APPENDIX A: MARKETING MATERIALS



PLAN 2050 ROCKFORD REGION metropolitan transportation plan

Help us improve transportation in the Rockford Region! Region 1 Planning Council (R1PC) is developing the area's metropolitan transportation plan (MTP). This plan will develop strategies to address the region's transportation needs over the next 20-30 years. We need YOUR help to make sure that the MTP reflects the needs and priorities of the community.

Join us at a public workshop:

Tuesday, January 22nd - 4:00 to 6:30 p.m.
North Suburban Library*, 6340 N. 2nd Street, Loves Park
*Along RMTD Bus Route 22

...

Wednesday, January 23rd - 4:00 to 6:30 p.m.
Byron Public Library, 100 S. Washington Street, Byron

...

Thursday, January 24th - 3:00 to 6:00 p.m.
Regional Design Center, 313 N. Main Street, Rockford

...

Tuesday, January 29th - 10:30 a.m. to 1:30 p.m.
East Side Transfer Center, 725 N. Lyford Road, Rockford

...

Wednesday, January 30th - 2:00 to 5:00 p.m.
Machesney Park Village Hall*, 300 Roosevelt Rd, Machesney Park
*Along RMTD Bus Route 22

...

Thursday, January 31st - 6:30 to 8:00 p.m.
Belvidere Family YMCA, 220 W. Locust Street, Belvidere

Answer a few questions for us:

The public survey for the project is now live online.
Visit: www.r1planning.org/mtp

Visit one of our pop-up booths:

Stop by one of our pop-up booths at various locations throughout the region. Dates & times of these pop-up booths will be posted on our website and on the R1PC's social media accounts.

Send your thoughts by February 15 to:



(815) 319-4180



info@r1planning.org



Region 1 Planning Council, MPO
313 N. Main Street
Rockford, IL 61101



For more information on this project or to stay updated on our progress and new opportunities to participate, visit the project's webpage at: www.r1planning.org/mtp

Help us improve transportation in the region! Take our survey on needs and priorities of the community.

PLAN 2050

ROCKFORD REGION

metropolitan transportation plan

...

Take our survey or share your thoughts by **February 15th** at:

www.r1planning.org/mtp

To stay informed or get more involved with the Region 1 Planning Council visit: www.r1planning.org/



You're invited to attend a public workshop!

Learn more about the metropolitan transportation plan and help us identify the transportation **needs**, investment **priorities**, and other **factors** that will shape the transportation network over the next 20 - 30 years.

YOUR VOICE MATTERS. HELP IMPROVE **transportation** IN THE ROCKFORD REGION.

Tuesday, January 22nd - 4:00 to 6:30 p.m.
North Suburban Library, 6340 N. 2nd Street, Loves Park
...

Wednesday, January 23rd - 4:00 to 6:30 p.m.
Byron Public Library, 100 S. Washington Street, Byron
...

Thursday, January 24th - 3:00 to 6:00 p.m.
Regional Design Center, 315 N. Main Street, Rockford
...

Tuesday, January 29th - 10:30 a.m. to 1:30 p.m.
RMTD East Side Transfer Center, 725 N. Lyford Road, Rockford
...

Wednesday, January 30th - 2:00 to 5:00 p.m.
Machesney Park Village Hall, 300 Roosevelt Road, Machesney Park
...

Thursday, January 31st - 6:30 to 8:00 p.m.
Belvidere Family YMCA, 220 W. Locust Street, Belvidere



PLAN 2050 ROCKFORD REGION metropolitan transportation plan

Help us improve transportation in the Rockford Region! Region 1 Planning Council (R1PC) is developing the area's metropolitan transportation plan (MTP). This plan will develop strategies to address the region's transportation needs over the next 20-30 years. We need YOUR help to make sure that the MTP reflects the needs and priorities of the community.

Answer a few questions for us:

The public survey for the project is now live online.
Visit: <http://r1planning.org/mtp/>.

Visit one of our pop-up booths:

Stop by one of our pop-up booths at various locations throughout the region. Dates & times of this pop-up booths will be posted on our website and on the R1PC's social media accounts.

Join us at a public workshop:

See the back of this card for the dates, times, and locations for the upcoming public workshops.

Send your thoughts by February 15 to:

-  (815) 319-4180
-  info@r1planning.org
-  Region 1 Planning Council, MPO
313 N. Main Street
Rockford, IL 61101

For more information on this project or to stay update on our progress and new opportunities to participate, visit the project's webpage at: www.r1planning.org/mtp.



YOUR VOICE MATTERS HELP IMPROVE
transportation
 IN THE ROCKFORD REGION.



PLAN 2050
 ROCKFORD REGION
 metropolitan transportation plan

Here's still time to join the conversation!

Due to the recent severe weather, we have rescheduled two of our workshops & have several more pop-up booths throughout the region.

Join us at a public workshop:

At these events you will have a chance to learn more about the metropolitan transportation plan and help us identify the transportation needs, investment priorities, and other factors that will shape the transportation network over the next 20 - 30 years.

Tuesday, February 12th - 4:00 to 6:30 p.m.
 North Suburban Library, 6340 N. 2nd Street, Loves Park

...

Thursday, February 21st - 2:00 to 4:30 p.m.
 Machesney Park Village Hall, 300 Roosevelt Road, Machesney Park

Visit one of our pop-up booths:

Stop by one of our pop-up booths at various locations throughout the region. These are simply condensed versions of our workshops, where you can learn more about the metropolitan transportation plan and help identify the needs and priorities of the region.

Thursday, February 7th - 11:30 a.m. to 1:30 p.m.
 Veterans Memorial Hall, 211 N. Main Street, Rockford

...

Friday, February 8th - 3:00 to 5:00 p.m.
 Giovanni's Convention Center, 610 N. Bell School Road, Rockford

...

Monday, February 11th - 1:00 to 3:00 p.m.
 YWCA Northwestern Illinois, 4990 E. State Street, Rockford

...

Wednesday, February 13th - 5:00 to 7:00 p.m.
 MercyHealth Sportscore Two, 8800 E. Riverside Boulevard, Loves Park

...

Wednesday, February 20th - 11:30 a.m. to 1:00 p.m.
 Rock Valley College-Student Center, 3301 N. Mulford Road, Rockford

...

Wednesday, February 20th - 11:30 a.m. to 1:00 p.m.
 Rock Valley College-Resource Center, 3301 N. Mulford Road

Answer a few questions for us:

The public survey for the project is online.
 Visit: <http://r1planning.org/mtp/>.

Or send your thoughts by March 1st to:

(815) 319-4180

info@r1planning.org

Region 1 Planning Council, MPO
 313 N. Main Street
 Rockford, IL 61101



APPENDIX B: MEDIA & ADVERTISEMENTS



Official Certificate of Publication as Required by State Law and IPA By-Laws

Certificate of the Publisher

TRRT, Inc., certifies that it is the publisher of the The Rock River Times. The Rock River Times is a secular newspaper, has been continuously published weekly for more than fifty (50) weeks prior to the first publication of the attached notice, is published in the City/Village of Rockford, County of Winnebago, Township of Rockford, State of Illinois, is of general circulation throughout that county and surrounding area, and is a newspaper as defined by 715 ILCS 5/5.

A notice, a true copy of which is attached, was published 1 times in The Rock River Times, namely one time per week for 1 successive weeks. The first publication of the notice was made in the newspaper, dated and published on December 19, 2018, and the last publication of the notice was made in the newspaper dated and published on December 19, 2018. The notice was also placed on a statewide public notice website as required by 715 ILCS 5/2.1.

In witness, TRRT, Inc., has signed this certificate by Joshua Johnson, its publisher, at Rockford, Illinois, on December 19, 2018.

TRRT, Inc.

By:

A handwritten signature in black ink that reads "Joshua Johnson".

Joshua Johnson

Publisher

(Note: Unless otherwise ordered, notarization of this document is **not** required.)

LEGAL NOTICE
REGION 1 PLANNING
COUNCIL LAUNCHES
ONLINE SURVEY AND HOSTS
PUBLIC WORKSHOPS
TO GATHER INPUT
ON THE TRANSPORTATION
NEEDS AND PRIORITIES
FOR THE REGION 1
TRANSPORTATION PLAN.
Region 1 Planning Council
(RPC) is seeking input from the
Metropolitan Planning Organization
(MPO) Public Engagement Survey
for the development of the MPO
RPC is seeking to engage the
public and stakeholders in a variety
of ways. RPC requests public
participation in the development
process by helping identify the
transportation needs, investment
priorities, and other factors that
will shape the transportation plan
work over the coming decade in
Bonne, Winnebago, and northern
Ogle Counties.
Each year federal and state
dollars are invested into the trans-
portation system in the region. Met-
ropolitan Planning Organizations
(MPO), such as Region 1 Planning
Council, must update their MTP
every five years in order for the
region to obtain and invest federal
transportation funding. The MTP
serves as the blueprint for these
investments over the next 20-30
years. The last update, *Transportation
Plan for Tomorrow (2040) - Along
Range Transportation Plan for the
Rockford Region*, was last adopted
by the MPO Policy Committee in
July 2015.
RPC has launched an online
survey on their website [www.r1planning.org](http://r1planning.org) to gather public
input for the 2050 MTP. The sur-
vey covers current transportation
needs within the region, as well
as how to plan for transportation
and development out to 2050.
Survey answers will be used to
help develop the 2050 MTP goals
and strategies.
The following public work-
shops will be hosted by Region
1 Planning Council to provide
information of the current state
of the transportation network and
gather public input. The format
of these workshops allows for
informal discussion between the
public and RPC staff, as well as
activities. The times and locations
are indicated below.
Tuesday, January 22, 2019
4:00 - 6:30 PM
North Suburban Library/Loves
Park
6940 N 2nd St., Loves Park, IL

Regional Design Center
315 N. Main St., Rockford, IL
Tuesday, January 29, 2019
10:30 AM – 1:30 PM
RMFD East Side Transfer Center
725 N. Lyford Rd., Rockford, IL
Wednesday, January 30, 2019
2:00 – 5:00 PM
Madhesney Park Village Hall
300 Roosevelt Rd., Madhesney
Park, IL
Thursday, January 31, 2019
6:30 – 8:00 PM
Belvidere Family YMCA
220 W. Locust St., Belvidere, IL

RIFC is also organizing additional events throughout the three-county area to gather public insight through early February 2019. A full list of events will be posted on the RIFC website at <http://rifaonline.org/index.cfm> 97958 TRRT 12/19

APPENDIX C: STAKEHOLDER INTERVIEW QUESTIONNAIRES



COLLABORATIVE PLANNING FOR NORTHERN ILLINOIS

Partner Agency – Transportation Needs

2050 Long Range Transportation Plan

Name:

Position:

Organization:

Date:

General

Are you familiar with the current MPO Long Range Transportation Plan?

What do you think are the most important issues facing the area today?

Growth

Regardless of your position, do you believe the Rockford Region will continue to grow?

How should growth be managed?

- Direct new growth to specific locations. If so, which specific areas?
- Direct new growth away from specific locations. If so, which specific areas?
- Reinvest/redevelop cities and older suburbs
- Economic needs should be the driving force to determine where growth occurs

How should growth look?

Do you believe that new development and/or redevelopment activities will generate significant traffic congestion and parking problems with the Region? If so, where do you think these problem areas will be?

Transportation

What transportation issues concern you the most with respect to your community or organization?

How have the transportation needs of your community or organization changed over the last five to ten years?

What are the strengths of the Rockford Region's existing transportation system?

What are the weaknesses of the Rockford Region's existing transportation system?

As a region, what are the biggest issues/problems our transportation system is currently facing? Over the next five to ten years? Over the next 20 years?

Are there particular projects or types of projects that you think needs emphasis in the LRTP, i.e. safety, transit, road maintenance, road capacity, bicycle, pedestrian, freight?

313 N. Main Street Rockford, Illinois 61101 R1planning.org p 815.319.4180

Winnebago County / City of Rockford / City of Loves Park / Village of Machesney Park / Boone County / City of Belvidere /
IDOT District #2 / Rockford Mass Transit District

Where are your three highest roadway improvement priorities and why?

Do you think funding is adequate for maintenance and improvements of the transportation system? (Yes/No)

- If not, how do you think additional funding should be raised and by whom, i.e. sales tax, fuel tax, fees, at the state level, at the local level?

Do you think new road corridors are needed? If so, where?

What do you think about technology as a potential solution to transportation needs (i.e. traffic management system, coordinating traffic signals, connected vehicles)? What types of technology should be considered?

Do you think that Rockford Mass Transit District services is accessible? Do you think services can be improved, if so how?

What are your impressions of the bicycle and pedestrian facilities within the region?

- Where are your three highest active transportation improvement priorities and why?

The MPO needs to prioritize transportation investments within the LRTP based on an established set of criteria. To what extent should the following factors be considered when prioritizing new transportation investments? (High, Medium, or Low Priority)

- Expansion: Expanding the system by constructing new roads and widening existing roads
- Preservation: Preserving and maintaining the existing roads and bridges
- Operations: Improving transportation system efficiency and reliability (e.g. traffic signal timing/coordination, work zone management, special event/road weather management)
- Safety: Improving safety for all roadway users, including bicyclists and pedestrians
- Connectivity: Creating a multimodal, interconnected system — connecting bikeways, pedestrian facilities, transit services, and roadways
- Technology: Expanding new technologies, such as intelligent transportation systems, green infrastructure, support for connected vehicles

Are there any additional factors you think should be used to prioritize transportation investments?

2040 Proposed Projects:

- Which of these projects have been completed?
- Which of these projects has significant money already been spent on project development or full funding is in place?
- How do you feel about the projects listed?
- Should they be honored in this update or should all funds be considered from scratch?

Wrap-Up

What other issues/factors do we need to take into consideration in the long range transportation plan?

What is your organization's expectations of the 2050 Long Range Transportation Plan?

What groups or people do you think needs to be engaged in the LRTP planning process?



Stakeholder Interview Questions

2050 Long Range Transportation Plan

Name/Organization:

Date:

General

Do you know what the MPO is? Are you familiar with the long range transportation plan is?

What do you think are the most important issues facing the area today?

Growth

Regardless of your position, do you believe the Rockford Region will continue to grow?

How should growth and future development be guided?

- Direct new growth to specific locations. If so, which specific areas?
- Direct new growth away from specific locations. If so, which specific areas?
- Reinvest/redevelop cities and older suburbs
- Economic needs should be the driving force to determine where growth occurs

How should growth look?

Do you believe that new development and/or redevelopment activities will generate significant traffic congestion and parking problems with the Region? If so, where do you think these problem areas will be?

Transportation

What transportation issues concern you the most with respect to your community or organization?

How have the transportation needs of your community or organization changed over the last five to ten years?

What are the strengths of the Rockford Region's existing transportation system?

What are the weaknesses of the Rockford Region's existing transportation system?

As a region, what do are the biggest issues/problems our transportation system is currently facing? Over the next five to ten years? Over the next 20 years?

The MPO coordinates with partner organizations to prioritize transportation investments within the LRTP based on an established set of criteria. To what extent should the following factors be considered when prioritizing new transportation investments? (High, Medium, or Low Priority)

- Boost Economic Vitality: Focus on investments that support trade, employment, and productivity.
- Enhance Safety: Making roads, bridges, transit system, sidewalks, and bike paths safer through improved designs and increased enforcement.
- Expand Technology: Implementing technology to improve safety and efficiency of traffic operations.
- Expand Travel Options: Provide more alternatives for people to travel to jobs, services, and other opportunities.
- Increase Capacity: Improving the movement of goods and people through the widening of existing roads and/or building of new roads
- Increase Connectivity: Creating a multimodal, interconnected system — connecting bikeways, pedestrian facilities, transit services, and roadways.
- Improve Efficiency: Make travel more efficient and reliable for moving people and goods.
- Maintain the System: Keep the current transportation system in good repair to extend the life of our investment.
- Protect the Environment: Promote transportation projects that help reduce air and water pollution and minimize impacts on natural areas.

Are there any additional factors you think should be used to prioritize transportation investments?

What do you think about technology as a potential solution to transportation needs (i.e. traffic management system, coordinating traffic signals, connected vehicles)? What types of technology should be considered?

Do you think that Rockford Mass Transit District services is accessible? Do you think services can be improved, if so how?

What are your impressions of the bicycle and pedestrian facilities within the region?

Are there particular corridors or areas that need transportation improvements?

Wrap-Up

What other issues/factors do we need to take into consideration in the long range transportation plan?

What is your or your organization's expectations of the 2050 Long Range Transportation Plan?

What groups or people do you think needs to be engaged in the LRTP planning process?

Active Transportation



Active Transportation Planning

Due to the number benefits that active transportation, such as bicycling or walking, provide - including health, safety, environmental, transportation, economic, and quality of life - transportation agencies bear the responsibility of ensuring the conditions and opportunities in their transportation network. Providing active transportation options creates a well-balanced, multimodal transportation network that provides travelers with a real choice of transportation modes.

However, active transportation planning is not limited to just the physical infrastructure of a community or region. To truly have a bicycle- and pedestrian-friendly community the following five strategies, known collectively as the "Five E's", should be considered and addressed in active transportation planning.

The "Five E's":

- Engineering:** Physical infrastructure and hardware to support bicyclists and pedestrians.
- Educational:** Programs that ensure the safety, comfort, and convenience of bicyclists, pedestrians, and fellow road users.
- Encouragement:** Incentives, promotions, and opportunities that engage and enable people to bike or walk.
- Enforcement:** Equitable laws and programs that ensure motorists and bicyclists are held accountable.
- Evaluation:** Processes that demonstrate a commitment to measuring results and planning for the future.

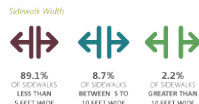
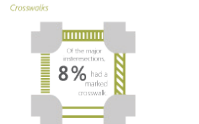
Pedestrian Network

An overview of the existing infrastructure in the Rockford MPA is available through the Rockford MPA's user-friendly opportunities and current conditions in the pedestrian network. The following provides an overview of the various elements the pedestrian uses on major roadways in the Metropolitan Planning Area (MPA).



- COMPLETE SIDEWALK (on one or both sides)
- PARTIAL SIDEWALK (on one or more sides)
- LITTLE SIDEWALK (less than 5 feet)
- NO SIDEWALK

Most common factor that makes it difficult to walk is that there is not enough sidewalk on too many gaps in the network system.



Bicycle Network

Facilities Shared use paths are the downtown bicycle facility. However, the region's many new on-street facilities have been added to the local bicycle network.



Bike Share
In April 2015, Lemble launched a bike share program in the Rockford region. Some of the insights from the program include:
more than 25,000 BDEs have been taken since the program launched.
0.5 MILES MEDIAN DISTANCE PER TRIP.
20 MIN MEAN TIME PER TRIP.

Planning in the Rockford Region

In 2012, the Bicycle & Pedestrian Plan for the Rockford Metropolitan Area was adopted. The purpose of this plan is to provide a safe and efficient transportation network for people that provide a balanced multi-modal system minimizing costs and impacts to the region's society and the environment. The Plan addresses the development of a region-wide system of on-street bicycle and pedestrian facilities to connect with existing shared use path facilities, existing and planned public transportation services and provide modal development regulations and ordinances to promote and encourage bicycle- and pedestrian-friendly growth in the Rockford Metropolitan Planning Area (MPA).

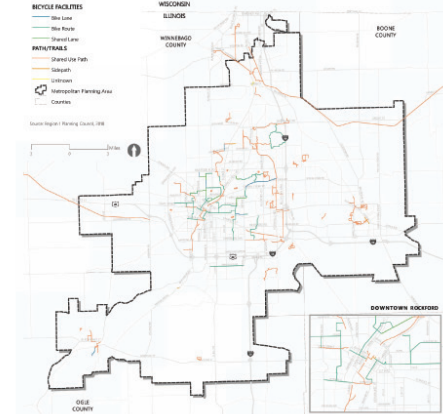
Vision Statement

"The Rockford Metropolitan Area envisions a community provided with a diverse and safe active transportation network of interconnected, continuous, and accessible systems of sidewalks, bicycle facilities and trails throughout the region. This network will foster a culture of safety, health, awareness, and recreation to enhance the quality of life for both residents and visitors through promoting active transportation alternatives."

Goals

- Safety:** Improve safety by decreasing the number and severity of crashes involving motorists, bicyclists, and pedestrians.
- Infrastructure:** Develop a well-connected active transportation network that links a variety of multi-modal facilities together and accommodates users of all ages and abilities.
- Collaboration:** Build a collaborative and cooperative environment within the region among stakeholders and communities that support active transportation choices.
- Funding:** Increase the utilization of funding to improve and sustain bicycle and pedestrian facilities.
- Education, Encouragement, Enforcement, & Evaluation:** Develop adequate education, encouragement, evaluation, and enforcement programs to create a more active bicycle and pedestrian culture in the region.

On-Street & Shared Use Paths, 2017



Safety & Barriers

Bicycle Safety

According to the MPO's recent Bicycle and Pedestrian Survey, one of the most common factors that make it difficult to bike is the lack of safety barriers.



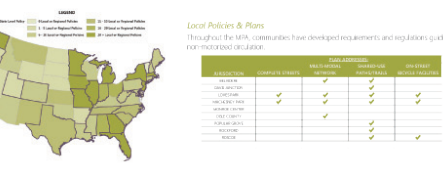
Pedestrian Safety

According to the MPO's recent Bicycle and Pedestrian Survey, one of the most common factors that make it difficult to walk is the lack of safety barriers.



Local Policies & Plans

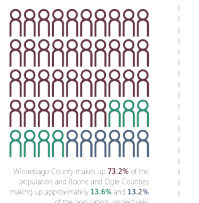
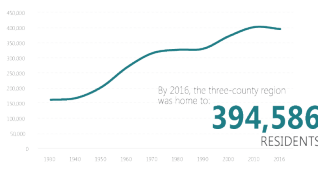
Through the MPA, communities have developed requirements and regulations guiding non-motorized circulation.



Demographics

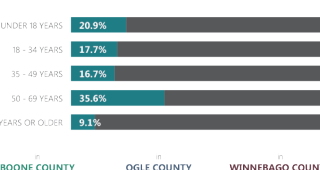
Population

Since the 1930s, the region has experienced cycles of significant growth followed by stabilization.



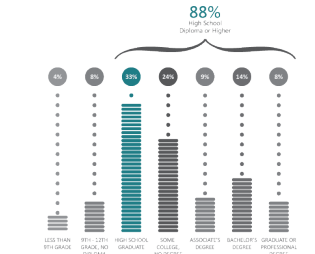
Age

In 2016, 36% of the population is between 50 and 69 years old, nearly double the 2000 rate of 19%.



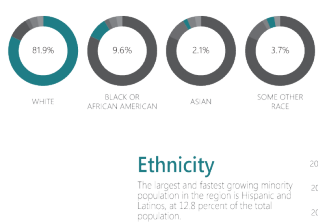
Education

A majority of the population, over the age of 25 years, has obtained at least a high school diploma or equivalent.



Race

The majority of the three-county region is white, this percentage has decreased by 3% since 2000.

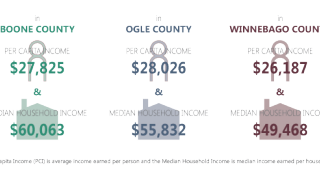


Ethnicity

The largest and fastest growing minority population in the region is Hispanic and Latino, at 12.8 percent of the total population.

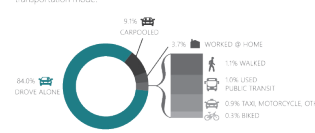
Income

All three counties have experienced a growth in both the per capita income and the median household income since 2000.



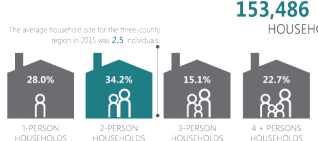
Commuting

In the Rockford region the vast majority of transportation to work is by a personal automobile, while only a small portion use an alternative transportation mode.



Households

The three-county region is currently experiencing two trends: an increase in the total number of households and a decrease in the average household size.

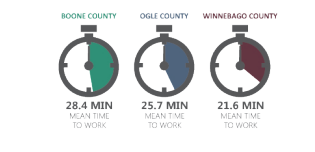


Poverty

While the income levels have increased since 2000, the poverty rates have also increased and is equal to the state of Illinois rate.



Commuting times are the longest for workers in Boone County with 13.6% of workers having a commute longer than 60 minutes.



Economic Development



Economic Development Planning

Economic Development refers to policies and actions that promote economic growth within a specific geographic area. The Declaration of Policy in 23 USC 301 for the Federal Highway Administration states that "transportation should play a significant role in promoting economic growth, improving the environment, and sustaining quality of life".

The economic goals that transportation policies and projects can support are generally determined by local priorities. They are often very specific to needs identified by local decision makers, such as to increase overall employment in a local area, increase employment in specific industry or economic sectors, or increase employment within a specific area (e.g., an identified "enterprise zone").

Transportation is widely recognized as a key component in urban economic growth. Much of this is intuitive. As first of all personal trips are based on recreational or leisure, everything else in some way related to economic productivity, such as commuting and work-related trips, shopping and running errands, and trips to school.

By enabling workers to reach employment, moving citizens to and from areas of service and shopping, facilitating global trade, and shipping products between producers and consumers, economic growth and transportation are closely linked. Improving physical access to economic opportunity enhances the efficiency of labor markets, brings public services within reach of all citizens, and generally can improve quality of life.

Planning in the Rockford Region

In 2003, the U.S. Department of Housing and Urban Development's Partnership for Sustainable Communities awarded the Metropolitan Planning Organization a grant to create a Regional Plan for Sustainable Development (RPSD) and a "Livable Community" that would house regional industry and sustainability needs. As part of this initiative, a report called "The State of Economic Well-Being of the Rockford Region" was produced that documents the research and indicators data for 16 distinct areas of Winnebago and Boone counties.

The Rockford MSA (Boone and Winnebago County) adopted its first Comprehensive Economic Development Strategy (CEDS) in 2010 and the most recent update was done in 2016. The process aligned public sector, private sector, nonprofit, and community partners, as well as public input, into a plan for regional development. One of the recommendations of the 2016 CEDS was the formation of a Regional Planning Council, which is now the Region 1 Planning Council.

Vision Statement

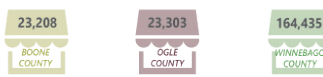
"In 2035, the Northern Illinois Region will be a world-class, prosperous region with a resilient economic base and a superior quality of life that outperforms peer regions in job growth, capital investment and innovation."

Goals

- A collaborative economic development strategy within the three county region emphasizing communication, cooperation, alignment of initiatives, shared assets, and protection of the region for business investments.
- Efficient business development, expansion, diversification, job growth, and retention throughout the region.
- Availability of a skilled and flexible workforce that successfully meets the needs of existing and emerging industries and technologies.
- A full range of infrastructure, with emphasis on transportation, utilities, and communication in order to successfully meet the needs of the region's businesses.
- Sustainable economic development with redevelopment of underused commercial and industrial properties, including brownfields, and promotion of and use patterns that allow for growth while protecting natural resources.
- A higher quality of life through support and enhancement of the region's sense of community identity, community health, natural resources, cultural and recreational amenities, and creative industries.

Employment

Total Employment (Number of Jobs), 2016



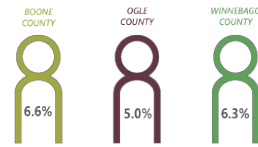
Percent of Unemployment, 2005 - 2017



Unemployment Rate, 2017

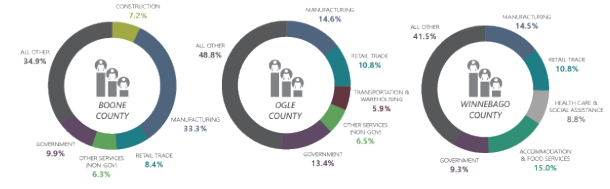
The average unemployment rate for the region has dropped nearly in half from its peak in 2010. However it is still 10% higher than pre-recession levels.

Some of the fluctuations in recent years can be due to people returning to the labor force.



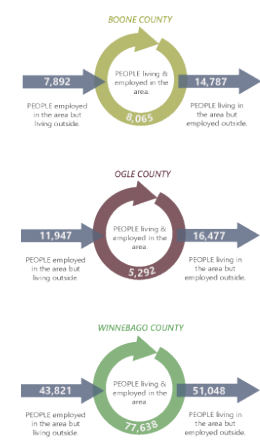
Jobs by Industry

This data shows the percent of workers earning a wage or salary, along with those who are self-employed. These statistics count workers in private industries and educational, state, and local government.



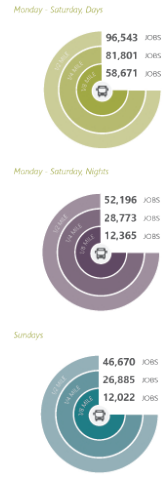
Commuting Patterns, 2015

Commuting patterns are an important indicator for measuring the sustainability of a region's labor market. A balanced and sustainable community will not depend on outside markets to supply jobs and those travelers should not have to travel great distances in order to secure employment, and employees seek to locate in areas which may supply a steady pool of qualified workers.



Jobs Accessible by Transit

The jobs shown below are located in Winnebago or Boone County accessible by METD routes.



Largest Retail Industries, Supply



Environmental Sustainability

Environmental Planning

During the past several decades there has been a growing awareness of the need to have a more thorough discussion and understanding of the relationship between the transportation planning process, the impacts of highway programming and construction and environmental protection. Our knowledge and understanding of the complexities of the natural environment and the built environment is a continuous process. The connection between these two regional planning issues has developed new sets of best practices and many new innovative design standards have been developed as a result of new ways of thinking.

On February 14, 2007, planning regulators issued jointly by the Federal Highway Administration (FHWA) and Federal Transit Administration (FTA), and continued under the Fixing America's Surface Transportation (FAST) Act, require a detailed policy approach to concentrate on the significant between biodiversity and other environmental impacts and the proposed transportation projects that are included in Metropolitan Planning Organizations (MPO) Long Range Transportation Plan, now known as Metropolitan Transportation Plans (MTP).

- Environmental Considerations in Transportation Planning:**
1. Park, current, or predicted future conditions of the natural and built environments;
 2. Environmental issues that identify environmental resources and environmentally sensitive areas;
 3. Designators of aesthetics and watersheds;
 4. Projections of future land use, natural resource conservation areas, and development;
 5. The outputs of natural resource planning efforts, such as wildlife conservation plans, watershed plans, special area management plans, and multiple species habitat conservation plans.

Planning in the Rockford Region

Linking the environment with transportation has been a large component of the MPO's planning process. The most notable environmental planning effort led by the MPO is the Boone and Winnebago Greenways Map, now in its fourth iteration. The first edition was published in 1991 and the latest update completed in 2015 (shown to the right).

The 2005 and 2011 editions of the Greenways Map did not have an accompanying written document. As a part of the most recent update it was important to the Greenways Planning Committee (members listed below) to produce a companion document with the 2015 Greenways Map Update as was done for the 1991 Greenways update process. This document incorporates the environmental preservation and conservation strategies outlined in the 2011 Boone and Winnebago County Greenways Plan as well as additional recommendations.

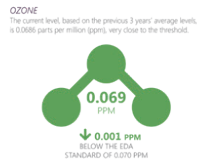
The greenways network is an interconnected region-wide network of linear open spaces that provide many benefits to northern Illinois: environmental, recreational, economic, aesthetic, and transportation to shared-use paths. Thus, the regional greenways network is a critical component of our "green" infrastructure.

Due to the importance of the greenways network, the MPO's Plan lays the foundation for natural area protection, balanced growth, and expanded transportation choices. This plan also has close ties to broader community planning initiatives. It promotes smart growth by protecting the region's rich natural resources while encouraging the treatment and development around existing communities and infrastructure through adaptive reuse of buildings and infill development.

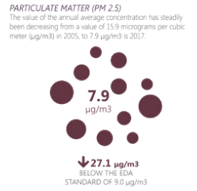
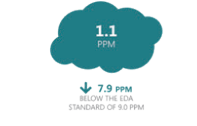
Greenways Planning Committee:
 Boone Park District
 Boone County Conservation District
 Boone County Soil & Water Conservation District
 Forest Preserves of Winnebago County
 Illinois Department of Natural Resources
 Natural Land Institute
 Rockford Park District
 Winnebago County Geographic Information System
 Winnebago County Soil & Water Conservation District

Air Quality

The Rockford region is an attainment area, meaning the air quality is better than the National Ambient Air Quality Standards.



CARBON MONOXIDE (CO)
 When examining the CO levels from 2000 to 2012, the region has experienced a steady decline from 2.1ppm to 1.1ppm.

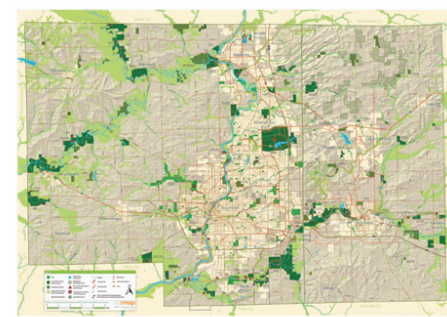


Green House Gas Emissions

The Center for Neighborhood Technology calculates two measures of greenhouse gas emissions (GHG) for each county (per acre and per household) based on the vehicle miles traveled per household.



Greenways Map, 2015



Watersheds

There are two watersheds in Boone County: the Kishwaukee River watershed and the Upper Rock River watershed. Both of these watersheds are within the Rock River basin.



Biologically Significant Streams

One stream in the three-region is designated as a biologically significant stream. Beaver Creek (Boone County) has an A, 2+ diversity rating, meaning that there is a significant variety of species types within several important aquatic groups located within the stream.



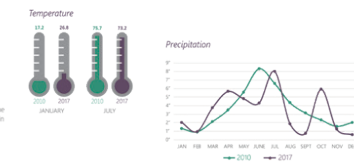
Alternative Fuel

Using alternative fuels and advanced vehicles instead of conventional fuels and vehicles helps conserve fuel and lower vehicle emissions. According to the Office of the Illinois Secretary of State, the registration of alternative fuel vehicles has significantly increased in our region just between November 2017 and September 2018. Additionally, there are a large number of alternative fueling stations within the region, according to the U.S. Dept. of Energy Alternative Fuels Data Center.



Climate

From 2005 to 2017 the winters here began to slightly warmer, while the summer months have begun to slightly cooler. When looking at precipitation trends for the region, the average yearly precipitation has stayed approximately the same in 2017 as it was in 2010.



Management & Operations



Management and Operations Planning

As part of the Fairing America's Surface Transportation (FAST) Act, MPOs that serve a transportation management area (TMA) are encouraged to develop a congestion management plan to assess efficient system management and operations. The FAST Act defines specific guidelines to document the congestion management process within a TMA. MPOs are charged with developing the Management and Operations Plan to guide the implementation of the TIP. The FAST Act recommends the Plan includes the following considerations:

- Reduce vehicle miles traveled during peak commuting hours
 - Improve transportation connections between areas with high job concentration and areas with high concentrations of low-income households
 - Identify existing public transportation services, employer-based commuter programs, and other existing transportation services that support access to jobs in the region
 - Identify proposed projects and programs to reduce congestion and increase job access opportunities
- The Management and Operations Plan is also required by the Federal Highway Administration (FHWA) and Federal Transit Administration (FTA) to include documentation of the regional Congestion Management Process (CMP). They outline specific categories of strategies to reduce vehicular congestion and maximize the safety and mobility of people and goods. These operations and management strategies, listed below, are to be led by state and local transportation officials:
- Identify demand management measures, including growth management and congestion pricing
 - Identify traffic operational improvements
 - Identify public transportation improvements
 - Identify ITS technologies that are related to the region's ITS architecture
 - Identify additional system capacity where necessary

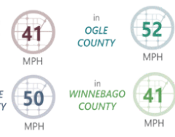
- As part of the congestion management process, MPOs are required to incorporate six key components into their metropolitan planning process, transportation system management and regional operations activities as summarized below:
- 1. Monitor** and evaluate performance of the multimodal transportation system
 - 2. Define** congestion management objectives and performance measures to evaluate best practices for congestion reduction and mobility enhancement of people and goods
 - 3. Establish** a data collection program to support congestion management performance measures and evaluate effectiveness of mobility enhancement strategies
 - 4. Identify** anticipated performance and expected benefits of suggested congestion management strategies aimed at improving various safety features of the future transportation system (e.g. demand management, traffic operational improvements, public transportation improvements, ITS technologies and architecture, and system capacity)
 - 5. Create** an implementation schedule that details funding sources, outline specific responsibilities and develop a timeline for the proposed implementation by the region
 - 6. Schedule** reevaluation of proposed objectives and performance measures to determine effectiveness and strengthen future congestion management strategies to share with policy-makers and the general public for feedback

Planning in the Rockford Region

The Management and Operations Plan, designed to improve the transportation network, reduce vehicular congestion, optimize the safe mobility of people and goods and implement the goals objectives listed MPO's Metropolitan Transportation Plan (MTP). Among to achieve these objectives, the Plan achieves to objectives driven and performance based standards from U.S. Department of Transportation (DOT) through FHWA/FTA.

The Plan is a strategic planning document and provides recommendations of implementation tools and policies that can be used in the future planning, construction, and maintenance phases of transportation infrastructure within the MPO metropolitan area. These strategies and recommendations guide the congestion management process in objective project selection and performance measure review. It provides a standardized method for the MPO transit operators and federal transportation authorities to benchmark the progress of the current transportation network in the region on a project by project basis, increasing operations activities and transportation systems management are becoming more integrated into the metropolitan planning process as regional issues of mode change, air pollution and job creation, increase in urbanized areas. Maintaining transportation management and operations through the congestion management process keep urban areas competitive to their counterparts in the global economy. In practice, the CMP is used for determining best strategies for regional coordination, infrastructure investment and system reliability of the transportation network.

Average Speed System Wide



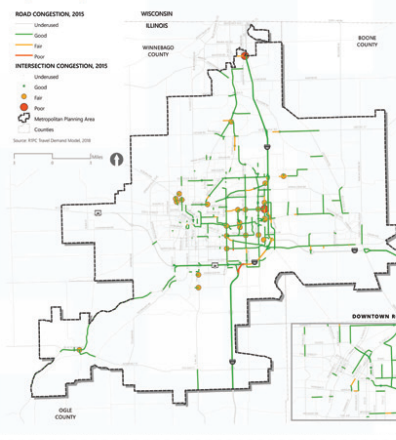
System Efficiency



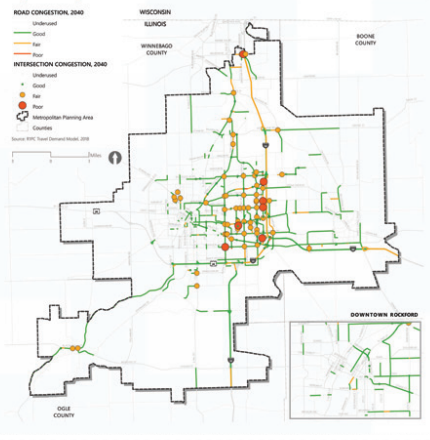
System Reliability



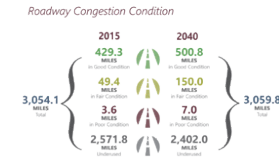
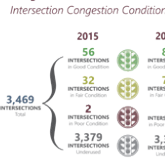
Congestion Map, 2015



Congestion Map, 2040



Congestion Condition



Congestion Management Projects

Category	Project	Estimated Cost
Engineering	Roads and Streets - US US 28 & Harmon Ave	\$450,000
	Roads and Streets - US US 28 & Harmon Ave	\$100,000
	Roads and Streets - US US 28 & Harmon Ave	\$800,000
Reconstruction	Roads and Streets - US US 28 & Harmon Ave	\$1,000,000
	Roads and Streets - US US 28 & Harmon Ave	\$1,000,000
Rehabilitation	Roads and Streets - US US 28 & Harmon Ave	\$1,000,000
	Roads and Streets - US US 28 & Harmon Ave	\$1,000,000
Rehabilitation	Bridge 140 Ramp and Bridge Repairs, Riverside	\$1,800,000
	Rehabilitation - Bridge 140 Ramp and Bridge Repairs, Riverside	\$1,800,000
Rehabilitation	Interchange/Overpass - US US 28 & Harmon Ave	\$750,000
	Interchange/Overpass - US US 28 & Harmon Ave	\$750,000
Rehabilitation	Roads and Streets - US US 28 & Harmon Ave	\$1,000,000
	Roads and Streets - US US 28 & Harmon Ave	\$1,000,000
Safety	Signal/Traffic - Rockford Capital Blvd. Signal Upgrade	\$300,000
	Signal/Traffic - Rockford Capital Blvd. Signal Upgrade	\$300,000



Highways & Streets

5,404 TOTAL LANES MILES

Roadway Planning

The Metropolitan Planning Area has an extensive roadway network of over 5,404 roadway miles. Roadways serve two functions, to provide mobility and to provide access. These two functions lie at opposite ends of the spectrum: roads provide some combination of both, high speeds and lower interchanges are preferred for mobility, while lower speeds and more frequent interchanges supports access. Roadways are classified by the role they play in the overall transportation network. Based on functional classification, the hierarchy includes Interstates, Major Collector, and Local Arterials provide the highest level of mobility, local roads provide mobility and access, and collectors have a balanced combination of both.

Interstate
Interstates have fully controlled access points and interchanges for high speeds and high volumes (AADT) typically between 35,000 and 200,000.

Freeway and Expressway
Freeway and Expressways are limited access roads not designated as Interstates but are preferred for high speeds and volumes. These roads may have interchanges and some at-grade intersections.

Other Principal Arterial
Other Principal Arterials carry relatively high traffic volumes, typically between 7,000 and 27,000 AADT but do not have an interchanged access points in Interstates.

Minor Arterial
Minor Arterials also provide for high volumes of local and through traffic (10,000 to 14,000 AADT) at moderate speed with limited access to adjoining properties.

Major Collector
Major Collector are designed for moderate speed and low traffic volume than arterials with access directed to the local streets.

Minor Collector
Minor Collector operate with lower speeds than Major counterparts, typically they have fewer regulated intersections and/or cut a short distance through residential neighborhoods before connecting to higher classified roads.

Local
Locally classified roads provide the most direct access, offering direct access to homes, businesses, and to adjacent lands. These roads are not for long distance travel but rather the origin or destination of a trip. Locally classified roads account for the largest portion of roads in the MPA, in terms of mileage.

Planning in the Rockford Region

The MPO is responsible for allocating and programming various federal and state transportation funding programs. The MPO works with partners to deliver the Metropolitan Transportation Plan (MTP) for the Rockford region. The Surface Transportation Block Grant (STBG) is one of the primary federal funding programs for the region to implement transportation projects identified in the MTP.

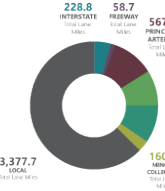
The STBG provides flexibility in state and local transportation decisions and provides funding to best address state and local transportation needs. The program funding may be used for projects to preserve and improve corridors and infrastructure on any regulated highway, pedestrian and bicycle infrastructure, transit capital, planning projects, and priority passenger projects.

The goal of the MPO Surface Transportation Block Grant Program funding is to support the implementation of the MPO MTP by enhancing the transportation system to provide mobility, social, and environmental improvements. The MPO has developed a selection process to direct the use of STBG program funds towards projects which will regional significance and which will have benefit to the entire region as a whole, as opposed to projects which only benefit single communities or small parts of the urban area.

Also, it is recognized that the transit transportation needs are diverse, complex and vary widely depending on time and circumstances. Consequently project priorities may change from year to year. The process and criteria selected above the Policy Committee the flexibility to adjust to unforeseen conditions or special needs.

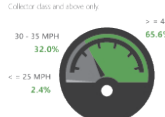
STBG projects are funded at a ratio of 80% federal funds and 20% local funds match for eligible project activities. The project applicant's STBG funds should be at the time of the project submitted identified in the sponsor organization's Capital Improvement Program (CIP), the MPO Transportation Improvement Program (TIP) and/or MPO MTP.

Miles by Functional Classification

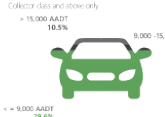


Roadway Characteristics

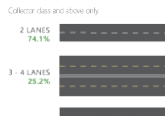
Speed of Roads



Traffic Volume



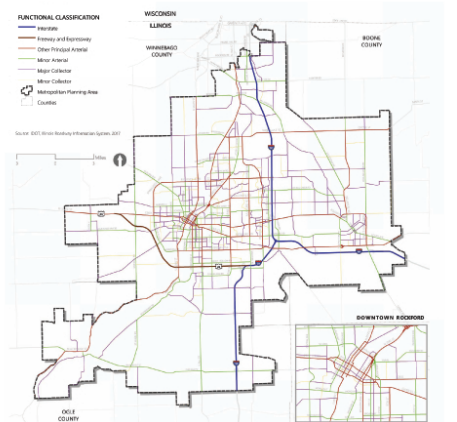
Number of Lanes



Funding



Roadways by Functional Classification



Maintenance

One of the most noticeable aspects of roads and one of the largest areas of concern for residents is the surface quality of roads. The ability to have smooth and comfortable drive through the county greatly improves citizens' satisfaction with the roadway network. Maintaining all of our roadways in a state of good repair is an ever continuing endeavor because of the largest challenge facing the region.

Miles Maintained by Agency Type



Pavement Condition

The basic assessment of the quality of the pavement in terms of roughness, cracking, rutting and potholing (PCI) is a Condition Rating Survey (CRS) to rate the condition.



Bridge Condition

As determined by a condition index of structural, deck, appurtenances, abutments, and approach roadways collected by the National Bridge Inventory (NBI).



Safety





Public Transportation

Public Transportation Planning

The public is the primary beneficiary of the nation's multimodal transportation system built to save public mobility and productivity. Public transportation transforms communities and the lives of the people living in them by spurring economic development, promoting sustainable lifestyles and providing a higher quality of life.

Public Transportation:

- Provides Economic Opportunities**
 - Every \$1 invested in public transportation generates \$4 in economic returns.
 - 73% of public funding for public transportation flows to the private sector, creating and supporting hundreds of thousands of jobs.

Is a Safe Way to Travel than by Automobile

- Traveling by public transportation is 18 times safer than traveling by automobile.

Saves Money

- A household can save nearly \$10,000 by taking public transportation and being with one less car.

Reduces Gasoline Consumption

- Public transportation's overall effect saves the U.S. 4.2 billion gallons of gas annually.

Reduces Carbon Footprint

- Communities that invest in public transit reduce the nation's carbon emissions by 37 million metric tons annually.

Enhances Personal Opportunities

- Public transportation provides personal mobility and freedom for many different people.
- A total of 87% of trips on public transit have a direct impact on the local economy.

Planning in the Rockford Region

The Rockford Mass Transit District is dedicated to providing safe, efficient, affordable, dependable, and accessible public transportation to the residents of Rockford and the surrounding area. For nearly five decades, BMTD has provided federally-subsidized, coordinated fixed route transit services for the Rockford Urbanized Area. The bulk of its service area is comprised within the City of Rockford, as well as service to the City of Loves Park and Village of Madison Park in Winnebago County, and some service to City of DeKalbe in Boone County on a contractual basis. BMTD also provides origin-to-destination Paratransit service for persons with disabilities such that their disability limits their ability to ride fixed route service.

There are service gaps in the network of public transportation providers and human service agencies due to constrained resources and limitations in fixed route and demand response services. With a shortage in funding from local municipalities to the broader statewide funding formula in Illinois, finding areas of coordination and partnership can assist in reducing the impact of those gaps by utilizing the strengths and resources of multiple agencies and partners to address common issues.

The MPO Coordinated Human Services Transportation Plan (Coordinated Plan) fulfills the need. It is intended to identify needs and gaps in public transportation services, particularly for seniors, individuals with disabilities, individuals with low incomes, and other transit-dependent populations in the MPO. The goals listed below are intended to address the gaps and needs.

Goals



Maintain or Enhance Existing Service Levels



Improve Coordination and Communication; Seek Efficiencies in Service Delivery



Improve Educational Outreach of Transit Providers and Services

Public Transportation Options

Public transportation options available within the Rockford MPO include:

Fixed-Route Service

Rockford Mass Transit District (BMTD)

Demand-Response Services

BMTD
Boone County Council on Aging (BCCA)
Lee-Ogle Transportation System (LOTS)
StateLine Mass Transit District (SMTD)

Private Motor Coach/Intercity Bus Services

Van Guilder
Burlington Trailways



Bus Fleet

BMTD currently maintains a fleet of 41 full-sized buses. At peak hours, approximately 20 buses are in service. BMTD also operates a "trolley bus" during the summer months. All buses are accessible to persons with disabilities.



Fixed Route
41 BUSES
in the fleet



Demand Response/ Paratransit
38 BUSES
in the fleet

Average Weekday Vehicle Miles Driven



Average Weekday Passengers



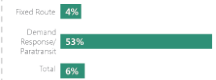
Annual Unlinked Passenger Trips

BMTD's fixed route service remains the primary public transportation option within the Rockford MPO, averaging over 1.6 million unlinked passenger trips per year and accounting for 95 percent of BMTD's total offered service ridership.



Unlinked passenger trips are single bus rides that do not account for multi-transfers needed to complete a trip.

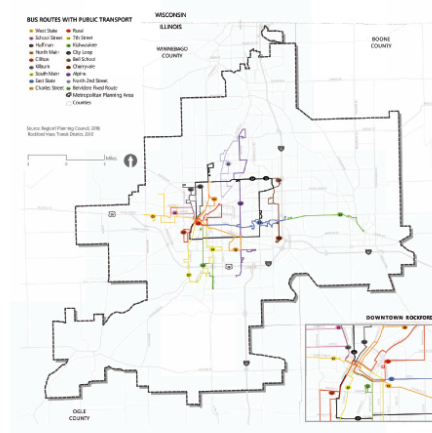
Ridership Increase since 2007



Fixed Route Service Area

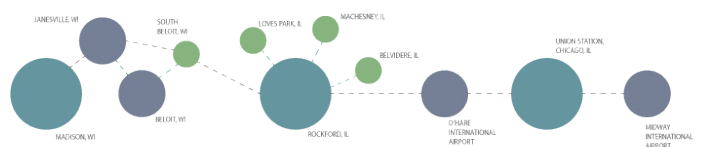


Rockford Mass Transit District's Fixed Routes, 2018



Intercity Destinations

There are three different frequent service types in the region. There is motor coach service by Van Guilder from Madison via Rockford toward Chicago. BMTD provides service to many cities in the region. There is also local transit service in certain areas of the region. The service between cities in the region are shown here.





What do you **love** most about transportation in the Rockford Region?



What would you **change** about transportation in the Rockford Region?

How should the region **prioritize** transportation projects?

To vote, simply place your sticker in that section!



Boost Economic Vitality

Focus on investments that support trade, employment, & productivity.



Enhance Safety

Making roads, bridges, transit system, sidewalk, & bike paths safer for through improved designs & increased enforcement.



Expand Technology

Implementing technology to improve safety & efficiency of traffic operations.



Expand Travel Options

Provide more alternatives for people to travel to jobs, services, & other opportunities.



Increase Capacity

Improving the movement of goods & people through widening of existing roads and/or building new roads.



Increase Connectivity

Creating a multimodal, interconnected system - connecting bikeways, pedestrian facilities, transit services, & roadways.



Improve Efficiency

Make travel more efficient & reliable for moving people and goods.



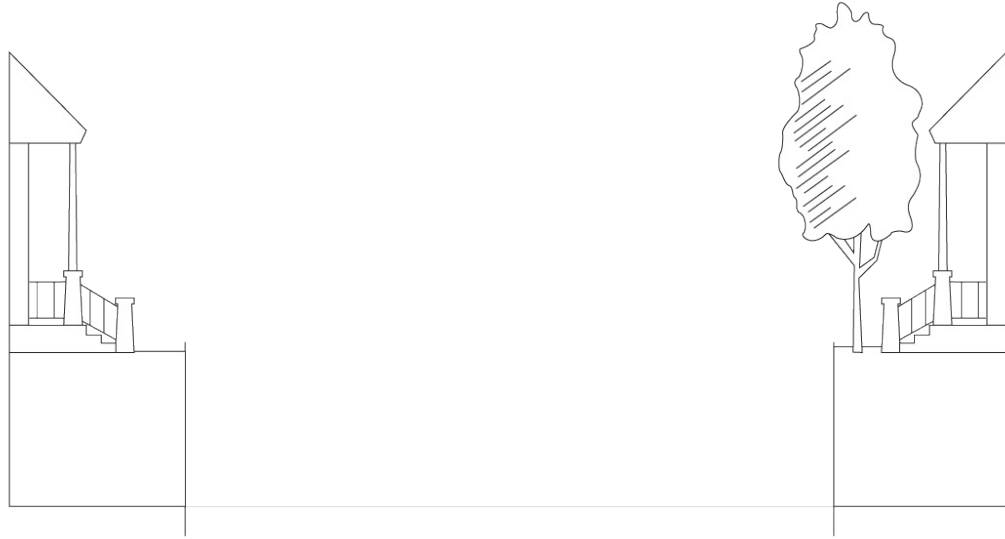
Maintain the System

Keep the current transportation system in good repair to extend the life of our investments.



Protect the Environment

Promote transportation projects that help reduce air and water pollution & minimize impacts on natural areas.



40' Residential Street Examples



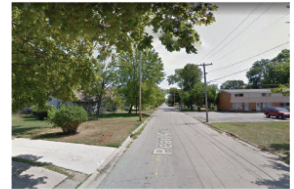
Harvard Avenue,
Rockford



Barbara Avenue,
Loves Park



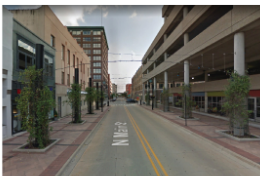
Paris Avenue,
Rockford



Pearl Avenue,
Loves Park



60' Commercial Street Examples



North Main Street,
Rockford



Sinkiwic Parkway,
Loves Park



Buchanan Street,
Belvidere



Broadcast Parkway,
Loves Park



MTP Public Workshop

Date: Thursday, January 24, 2019

Location: Regional Design Center, 315 N. Main St., Rockford, IL 61101

Name	Email Address	Would you like to be added to the mailing list?
1. <i>Art Kolodziej</i>		<input checked="" type="checkbox"/>
2. <i>Jay Pizer</i>		<input checked="" type="checkbox"/>
3. <i>David Lickteig</i>		<input checked="" type="checkbox"/>
4. <i>Caleb Barker</i>		<input type="checkbox"/>
5. <i>David Bartnes</i>		<input type="checkbox"/>
6. <i>Robbie Quirk</i>		<input checked="" type="checkbox"/>
7. <i>TIM HINKENS</i>		<input checked="" type="checkbox"/>
8. <i>Brad Koos</i>		<input type="checkbox"/>
9. <i>Van Paul Duda</i>		<input type="checkbox"/>
10. <i>MICHAEL DORAK</i>		<input checked="" type="checkbox"/>
11.		<input type="checkbox"/>
12.		<input type="checkbox"/>
13.		<input type="checkbox"/>
14.		<input type="checkbox"/>
15.		<input type="checkbox"/>
16.		<input type="checkbox"/>
17.		<input type="checkbox"/>
18.		<input type="checkbox"/>
19.		<input type="checkbox"/>
20.		<input type="checkbox"/>

Photographs and/or video recording may be taken during this event. By participating in these events, permission is granted that Region 1 Planning Council (RPC) and its partners may use such photographs and/or video with or without my name and for any lawful purpose, including for example such purposes as publicity, illustration, advertising, and web content. Please see a Region 1 Planning Council (RPC) staff member for any questions.



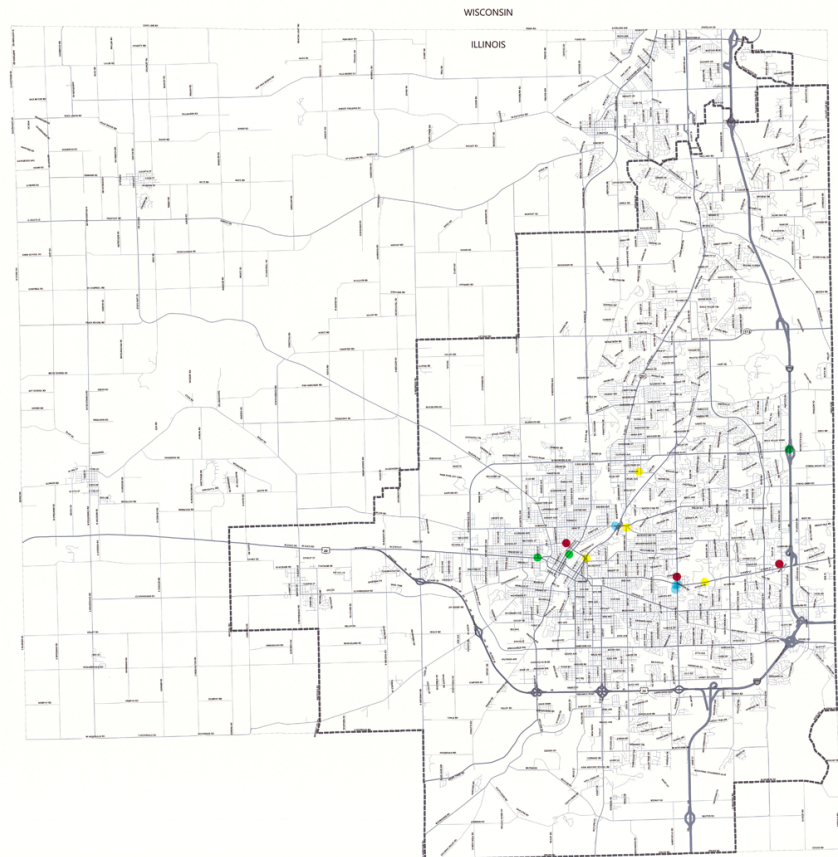
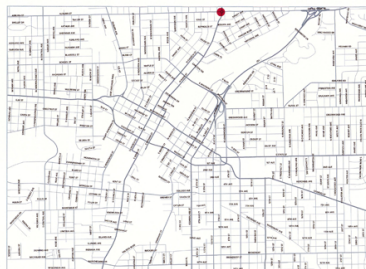
WINNEBAGO COUNTY

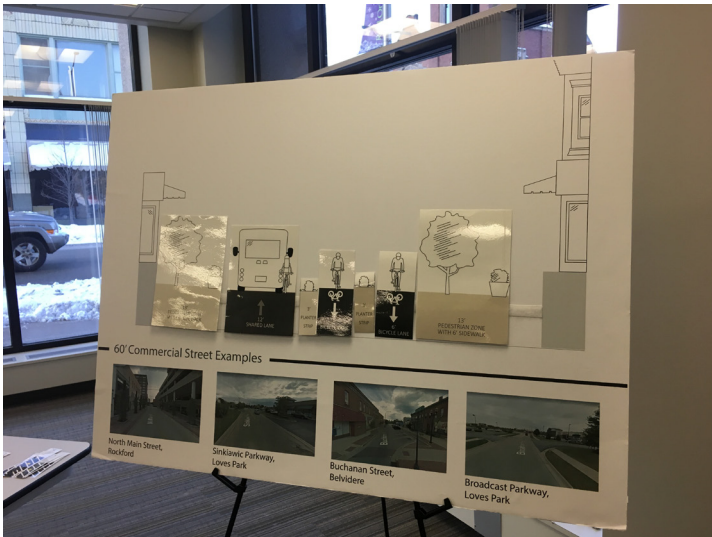
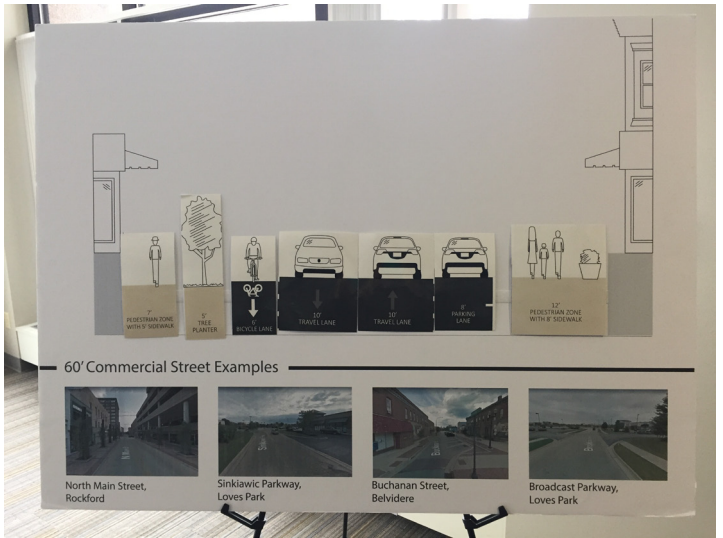
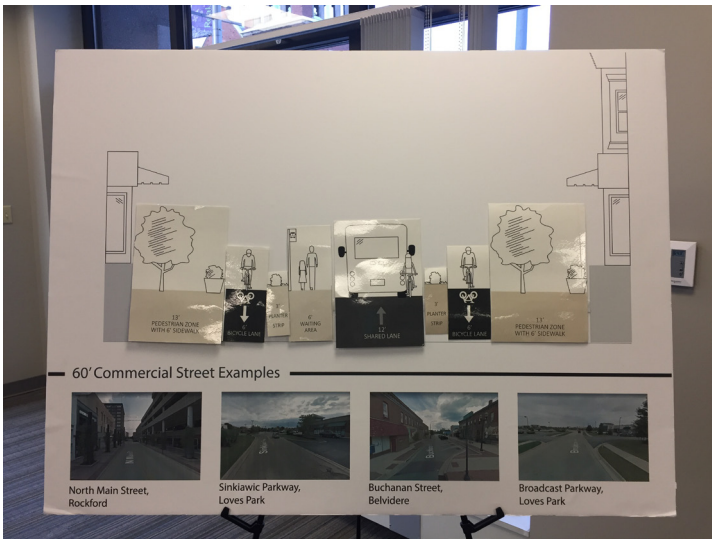
- Interstate
- Freeway and Expressway
- Other Principal Arterial
- Minor Arterial
- Major Collector
- Minor Collector
- Local Road or Street
- Metropolitan Planning Area
- Winnebago County

SOURCE: IDOT, Illinois Roadway Information System, 2017



DOWNTOWN ROCKFORD







PLAN 2050
ROCKFORD REGION
metropolitan transportation plan

MTP Public Workshop
Date: Tuesday, January 29, 2019
Location: RMTD East Side Transfer Center, 725 N. Lyford Rd., Rockford, IL 61107

Name	Email Address	Would you like to be added to the mailing list?
1. Michael O'Toole		<input checked="" type="checkbox"/>
2. Joan Butitta		<input checked="" type="checkbox"/>
3. CAROLYN AREVALO		<input type="checkbox"/> NA
4. Donna M. Becker		<input checked="" type="checkbox"/> Pending
5. Jeff Linkenheld		<input type="checkbox"/>
6.		<input type="checkbox"/>
7.		<input type="checkbox"/>
8.		<input type="checkbox"/>
9.		<input type="checkbox"/>
10.		<input type="checkbox"/>
11.		<input type="checkbox"/>
12.		<input type="checkbox"/>
13.		<input type="checkbox"/>
14.		<input type="checkbox"/>
15.		<input type="checkbox"/>
16.		<input type="checkbox"/>
17.		<input type="checkbox"/>
18.		<input type="checkbox"/>
19.		<input type="checkbox"/>
20.		<input type="checkbox"/>

Photographs and/or video recording may be taken during this event. By participating in these events, permission is granted that Region 1 Planning Council (RPC) and its partners may use such photographs and/or video with or without my name and for any lawful purpose, including for example such purposes as publicity, illustration, advertising, and web content. Please see a Region 1 Planning Council (RPC) staff member for any questions.

ALWAYS Available despite weather

METRO Patrol

3-4 lane roads good. The wider 2 h roads.

Bike Lanes

What do you **love** most about transportation in the Rockford Region?

What would you **change** about transportation in the Rockford Region?

SAFETY FOR DRIVERS & PATRONS

Toll Bridges Wider

Flashing yellow longer to indicate signal change from red.

ALot of

INCREASE SAFE Bike & Pedestrian Paths

Sync Stoplights on Pennville

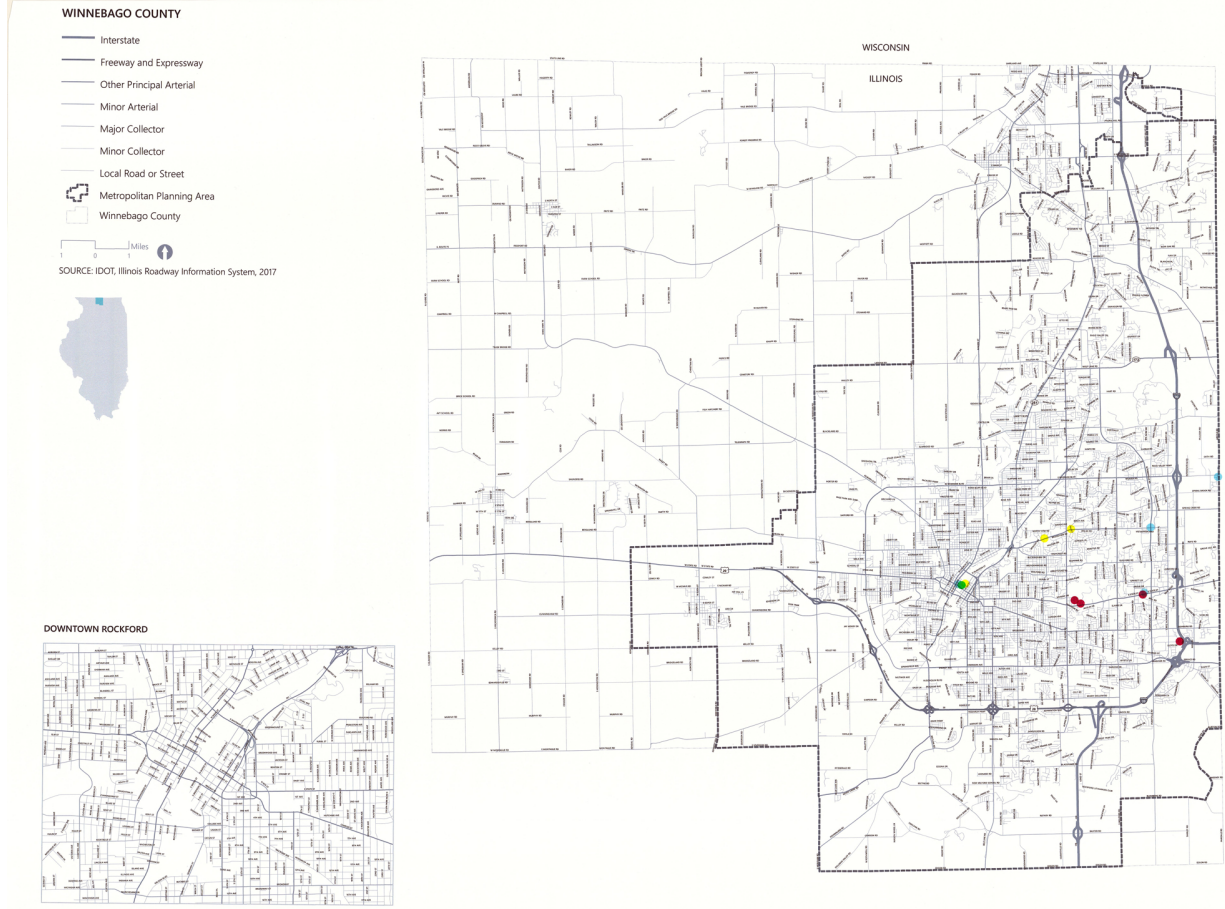
Make Truck PARKING

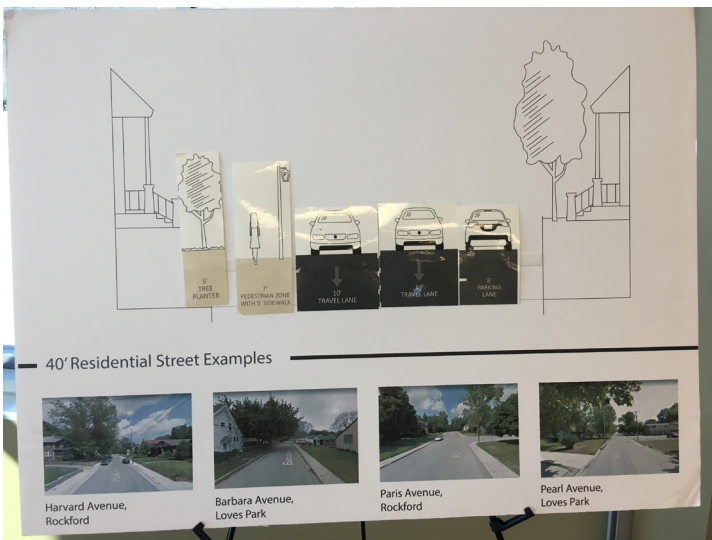
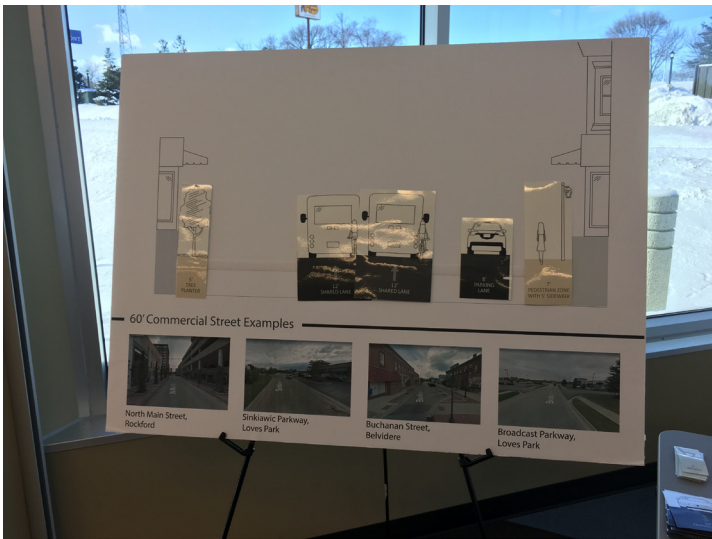
meditation

PRIVATE Transport for Residential streets

TIME Schedules Breaktime Random Drug Test

RMTD's schedule Books







MTP Public Workshop

Date: Thursday, January 31, 2019

Location: Belvidere Family YMCA, 220 W. Locust St., Belvidere, IL 61008

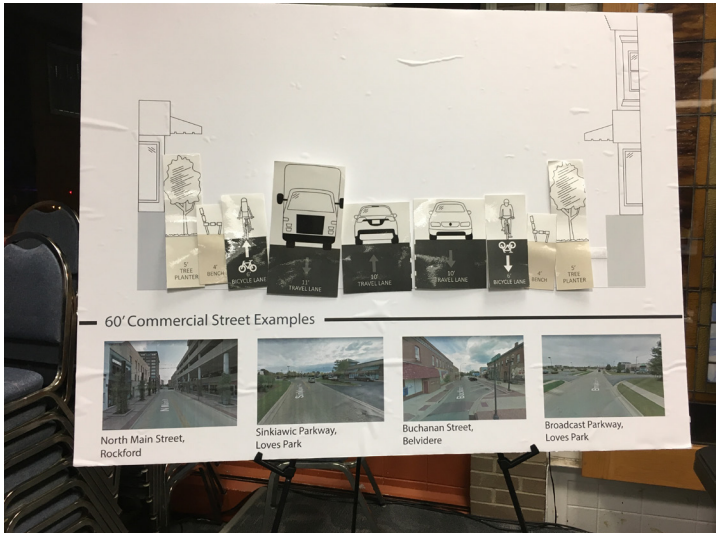
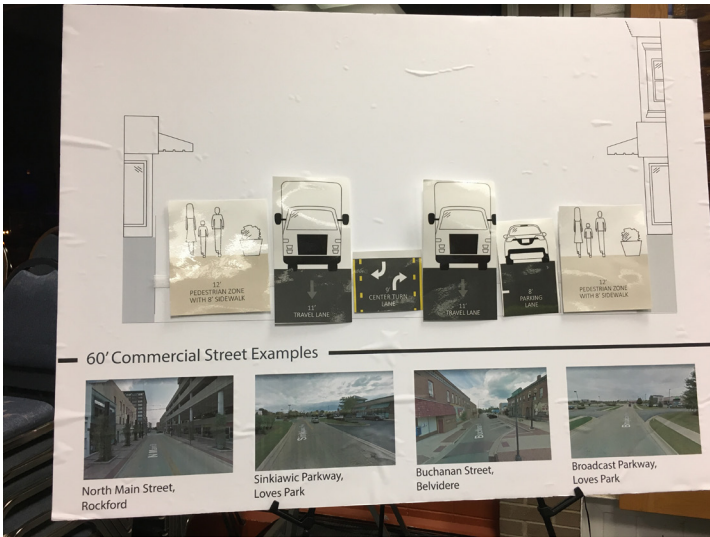
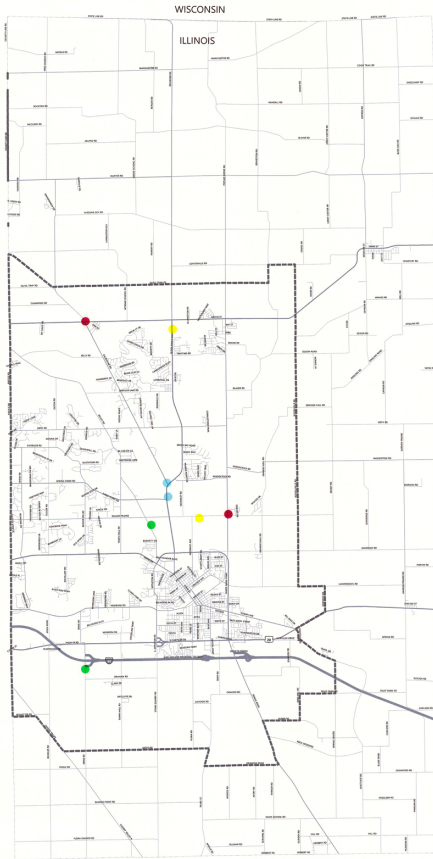
Name	Email Address	Would you like to be added to the mailing list?
1. <i>Ken Ferrinoni</i>		<input checked="" type="checkbox"/>
2. <i>Justin Krohn</i>		<input checked="" type="checkbox"/>
3. <i>Don Paul Diddy</i>		<input type="checkbox"/>
4.		<input type="checkbox"/>
5.		<input type="checkbox"/>
6.		<input type="checkbox"/>
7.		<input type="checkbox"/>
8.		<input type="checkbox"/>
9.		<input type="checkbox"/>
10.		<input type="checkbox"/>
11.		<input type="checkbox"/>
12.		<input type="checkbox"/>
13.		<input type="checkbox"/>
14.		<input type="checkbox"/>
15.		<input type="checkbox"/>
16.		<input type="checkbox"/>
17.		<input type="checkbox"/>
18.		<input type="checkbox"/>
19.		<input type="checkbox"/>
20.		<input type="checkbox"/>

Photographs and/or video recording may be taken during this event. By participating in these events, permission is granted that Region 1 Planning Council (RPC) and its partners may use such photographs and/or video with or without my name and for any lawful purpose, including for example such purposes as publicity, illustration, advertising, and web content. Please see a Region 1 Planning Council (RPC) staff member for any questions.

BOONE COUNTY

- Interstate
- Freeway and Expressway
- Other Principal Arterial
- Minor Arterial
- Major Collector
- Minor Collector
- Local Road or Street
- ⊞ Metropolitan Planning Area
- Boone County

SOURCE: IDOT, Illinois Roadway Information System, 2017



APPENDIX E: PRESENTATION AGENDAS



COLLABORATIVE PLANNING FOR NORTHERN ILLINOIS

Alternative Transportation Committee
Tuesday, October 9th, 2018 – 4:00 p.m.
Regional Center for Design
315 N. Main Street, Rockford, IL 61101

Agenda

1. CALL TO ORDER
2. PUBLIC COMMENT
3. ITEMS PRESENTED FOR INFORMATION OR DISCUSSION:
 - a. **RMTD Comprehensive Mobility Analysis:** Presentation on the RMTD Comprehensive Mobility Analysis. RMTD and RPC coordinated an application which was recently awarded Statewide Planning and Research funds from IDOT to complete an analysis for RMTD's service area.
 - b. **Update to the Long Range Transportation Plan:** Presentation and discussion on the process currently underway by the MPO for the update to the Long Range Transportation Plan for the Rockford Region.
4. OTHER BUSINESS
5. ADJOURNMENT

Opportunities for public comment will be afforded on all agenda items.

Persons who require special accommodations under the Americans with Disabilities Act or persons who require translation services (free of charge) should contact RMAP at 815-319-4180 at least two working days before the need for such services or accommodations.

313 N. Main Street Rockford, Illinois 61101 R1planning.org p 815.319.4180

Winnebago County / City of Rockford / City of Loves Park / Village of Machesney Park / Boone County / City of Belvidere /
IDOT District #2 / Rockford Mass Transit District



Alternative Transportation Committee
Tuesday, January 8th, 2019 – 2:00 p.m.
Regional Center for Design
315 N. Main Street, Rockford, IL 61101

Agenda

1. CALL TO ORDER
2. PUBLIC COMMENT
3. ITEMS PRESENTED FOR INFORMATION OR DISCUSSION:
 - a. **MPO Metropolitan Transportation Plan:** Presentation and discussion on the process currently underway by the RIPC (MPO) for the update to the Metropolitan Transportation Plan for the Rockford Region.
 - b. **RMTD Comprehensive Mobility Analysis:** Presentation and discussion on the process currently underway by RMTD and RIPC (MPO) for the RMTD Comprehensive Mobility Analysis.
 - c. **FTA 5310 Program:** Presentation and discussion regarding regionally allocated funding and current project selection process through the Federal Transit Administration Enhanced Mobility of Seniors & Individuals with Disabilities program. RMTD and IDOT are co-designated recipients of the funds allocated to the region.
4. ITEMS PRESENTED FOR ACTION:
 - a. Election of Committee Officers (Chair and Vice-Chair)
5. OTHER BUSINESS:
 - a. MPO Alternative Transportation Committee Bylaws
6. ADJOURNMENT

Opportunities for public comment will be afforded on all agenda items.

Persons who require special accommodations under the Americans with Disabilities Act or persons who require translation services (free of charge) should contact RMAP at 815-319-4180 at least two working days before the need for such services or accommodations.



ALTERNATIVE TRANSPORTATION COMMITTEE
Tuesday, April 9th, 2019 – 2:00 p.m.
Regional Center for Design
315 N. Main Street, Rockford, IL 61101

Agenda

1. CALL TO ORDER
2. PUBLIC COMMENT
3. ITEMS PRESENTED FOR ACTION:
 - a. **Nomination of Committee Officers (Chair and Vice-Chair)**
 - b. **FTA 5310 Program:** Discussion regarding applications received during the FY 2019 local 5310 Call for Projects (March 4th, 2019 – April 4th, 2019) for the region's FY 2017 and FY 2018 allocated funds. The MPO ATC is asked for its recommendation to the MPO Technical Committee.
4. OTHER BUSINESS:
 - a. **MPO Alternative Transportation Committee Bylaws:** The Alternative Transportation Committee Bylaws were formally adopted by the MPO Policy Committee, via MPO Resolution 2019-6 at the February 28th, 2019 meeting.
 - b. **MPO Metropolitan Transportation Plan Update**
 - c. **RMTD Comprehensive Mobility Analysis Update**
 - d. **Meeting Minutes**
5. OTHER DISCUSSION
6. ADJOURNMENT

Opportunities for public comment will be afforded on all agenda items.

Persons who require special accommodations under the Americans with Disabilities Act or persons who require translation services (free of charge) should contact R1PC at 815-319-4180 at least two working days before the need for such services or accommodations.

313 N Main St, Rockford, IL 61101 | 815-319-4180 | info@r1planning.org

www.r1planning.org





ENVIRONMENTAL COMMITTEE

Thursday, February 28, 2019 – 4:00pm – 5:00pm
Regional Design Center – 315 N. Main St.

AGENDA

1. INTRODUCTION
 - a) Attendee Introductions
 - b) Previous Meeting's Minutes
 - c) RPC Board Meeting Recap
2. UPDATES
 - a) Eric Setter (RIPC) Presentation on Northern Illinois Land Bank Authority – Including Discussion
 - b) Sydney Turner, Metro Program Manager – An introduction to the Metropolitan Transportation Plan (MTP) process.
3. RELEVANT OPPORTUNITIES
 - a) 2019 Bi-State Alternative Energy Conference
 - Tuesday, March 5th 2019, 9:00am-3:30pm – Garber Center, Room Galve 3, 3435 9 ½ Avenue, Rock Island IL 61021 ***Must Register for Event***
 - b) RIPC Open Positions
 - Land-Use Planner (Currently Interviewing Candidates)
 - Metropolitan Planner
 - Internships
4. LARGE GROUP SESSION
 - a) Report Out from Each Working Group On Project Progress
5. ADJORNMENT
 - a) Next Environmental Committee Meeting **March 28th, 2019**
6. WORKING GROUP SESSION
 - a) Work on Group's Project if the Time is Needed.

Opportunities for public comment will be afforded on all agenda items.

Persons who require special accommodations under the Americans with Disabilities Act or persons who require translation services (free of charge) should contact RMAP at 779-348-7627 at least two working days before the need for such services or accommodations.

313 N. Main Street Rockford, Illinois 61101 R1planning.org p 815.319.4180

Winnebago County / Boone County / City of Rockford / City of Belvidere / City of Loves Park / Village of Machesney Park /
Rockford Mass Transit District / IDOT District #2



RMAP TECHNICAL COMMITTEE
Thursday, June 21, 2018 – 10:00am
City of Loves Park, City Hall – 100 Heart Blvd

AGENDA

1. APPROVAL OF THE MAY 24, 2018 RMAP TECHNICAL COMMITTEE MEETING MINUTES
2. COMMUNICATIONS

3. AGENCY REPORTS:

VOTING MEMBERS

- 3.01 - Illinois Dept. of Transportation, District 2
- 3.02 - Winnebago County Highway Department
- 3.03 - City of Rockford, Public Works Dept.
- 3.04 - City of Loves Park, Public Works Dept.
- 3.05 - Village of Machesney Park
- 3.06 - Chicago/Rockford International Airport
- 3.07 - Rockford Mass Transit District
- 3.08 - City of Loves Park, Community Development Dept.
- 3.09 - Village of Cherry Valley
- 3.10 - City of Rockford, Community Development Dept.
- 3.11 - Winnebago County Planning and Economic Development Dept.
- 3.12 - *not assigned*
- 3.13 - Boone County Highway Dept.
- 3.14 - City of Belvidere, Public Works Dept.
- 3.15 - Village of Roscoe
- 3.16 - Village of Winnebago
- 3.17 - Rock River Water Reclamation District
- 3.18 - Forest Preserves of Winnebago County

- 3.19 - Boone County Conservation District
- 3.20 - Rockford Park District
- 3.21 - Winnebago County Soil & Water Conservation District
- 3.22 - Village of Poplar Grove

NON-VOTING MEMBERS

- 3.23 - Illinois Environmental Protection Agency
- 3.24 - Illinois State Toll Highway Authority
- 3.25 - IDOT, Division of Public Transportation
- 3.26 - IDOT, Division of Urban Program Planning
- 3.27 - Ogle County Highway Dept.
- 3.28 - Boone County Council of Aging
- 3.29 - State Line Area Transportation Study
- 3.30 - Federal Highway Administration, IL Division
- 3.31 - Economic Development District of Northern Illinois
- 3.32 - Growth Dimensions
- 3.33 - Stateline Mass Transit District
- 3.34 - Rockford Metropolitan Agency for Planning

4. MPO TRANSPORTATION ALTERNATIVES PROGRAM (TAP) – RMAP RESOLUTION 2018-11: Discussion of the Transportation Alternative Program. A competitive call for projects was held from April 5th to May 11th, 2018. The RMAP Technical Committee is asked for its recommendation of RMAP Resolution 2018-11.
5. RMAP FY 2018 – FY 2021 TRANSPORTATION IMPROVEMENT PROGRAM (TIP) AMENDMENT – RMAP RESOLUTION 2018-12: Amendment to the RMAP FY 2018-2021 TIP at the request of the Rockford Mass Transit District for the addition of projects and modification of existing projects. The RMAP Technical Committee is asked for its recommendation of RMAP Resolution 2018-12.
6. LONG-RANGE TRANSPORTATION PLAN (LRTP) UPDATE: Discussion regarding the current planning efforts underway and the next steps for the 2020 LRTP update.
7. MPO PERFORMANCE MEASURES UPDATE: Discussion on the federally required performance measures categories from the FAST Act. Pavement & Bridge (PM2) and System Performance (PM3) performance targets must be established by the MPO no later than November 14th, 2018.



RMAP TECHNICAL COMMITTEE
Thursday, August 16th, 2018 – 10:00am
City of Loves Park, City Hall – 100 Heart Blvd

AGENDA

1. APPROVAL OF THE JUNE 21, 2018 RMAP TECHNICAL COMMITTEE MEETING MINUTES
2. COMMUNICATIONS

3. AGENCY REPORTS:

VOTING MEMBERS

- 3.01 - Illinois Dept. of Transportation, District 2
- 3.02 - Winnebago County Highway Department
- 3.03 - City of Rockford, Public Works Dept.
- 3.04 - City of Loves Park, Public Works Dept.
- 3.05 - Village of Machesney Park
- 3.06 - Chicago/Rockford International Airport
- 3.07 - Rockford Mass Transit District
- 3.08 - City of Loves Park, Community Development Dept.
- 3.09 - Village of Cherry Valley
- 3.10 - City of Rockford, Community Development Dept.
- 3.11 - Winnebago County Planning and Economic Development Dept.
- 3.12 - *not assigned*
- 3.13 - Boone County Highway Dept.
- 3.14 - City of Belvidere, Public Works Dept.
- 3.15 - Village of Roscoe
- 3.16 - Village of Winnebago
- 3.17 - Rock River Water Reclamation District
- 3.18 - Forest Preserves of Winnebago County

- 3.19 - Boone County Conservation District
- 3.20 - Rockford Park District
- 3.21 - Winnebago County Soil & Water Conservation District
- 3.22 - Village of Poplar Grove

NON-VOTING MEMBERS

- 3.23 - Illinois Environmental Protection Agency
- 3.24 - Illinois State Toll Highway Authority
- 3.25 - IDOT, Division of Public Transportation
- 3.26 - IDOT, Division of Urban Program Planning
- 3.27 - Ogle County Highway Dept.
- 3.28 - Boone County Council of Aging
- 3.29 - State Line Area Transportation Study
- 3.30 - Federal Highway Administration, IL Division
- 3.31 - Economic Development District of Northern Illinois
- 3.32 - Growth Dimensions
- 3.33 - Stateline Mass Transit District
- 3.34 - Rockford Metropolitan Agency for Planning

4. RMAP FY 2019 – FY 2022 TRANSPORTATION IMPROVEMENT PROGRAM (TIP) – RMAP RESOLUTION 2018-13: Review and discussion regarding the final draft of the FY 2019 – FY 2022 TIP document by the MPO Technical Committee. The MPO Technical Committee is asked for its recommendation of **RMAP Resolution 2018-13**.
5. MPO COOPERATIVE AGREEMENT– RMAP RESOLUTION 2018-14: Review and discussion of the updated Cooperative Agreement revising fiscal agency for the MPO. The MPO Technical Committee is asked for its recommendation of **RMAP Resolution 2018-14**.
6. LONG-RANGE TRANSPORTATION PLAN (LRTP) UPDATE: Discussion regarding the current planning efforts underway and the next steps for the LRTP update.
7. MPO PERFORMANCE MEASURES UPDATE: Discussion on the federally required performance measures categories from the FAST Act. Pavement & Bridge (PM2) and System Performance (PM3) performance targets must be established by the MPO no later than November 14th, 2018.



MPO TECHNICAL COMMITTEE
Thursday, October 18th, 2018 – 10:00am
City of Loves Park, City Hall – 100 Heart Blvd

AGENDA

1. APPROVAL OF THE JUNE 21, 2018 MPO TECHNICAL COMMITTEE MEETING MINUTES
2. COMMUNICATIONS

3. AGENCY REPORTS:

VOTING MEMBERS

- 3.01 - Illinois Dept. of Transportation, District 2
- 3.02 - Winnebago County Highway Department
- 3.03 - City of Rockford, Public Works Dept.
- 3.04 - City of Loves Park, Public Works Dept.
- 3.05 - Village of Machesney Park, Public Works
- 3.06 - Chicago/Rockford International Airport
- 3.07 - Rockford Mass Transit District
- 3.08 - City of Loves Park, Community Development Dept.
- 3.09 - Village of Machesney Park, Planning Department
- 3.10 - City of Rockford, Community Development Dept.
- 3.11 - Winnebago County Planning and Economic Development Dept.
- 3.12 - Boone County, Planning Department
- 3.13 - Boone County Highway Dept.
- 3.14 - City of Belvidere, Public Works Dept.
- 3.15 - City of Belvidere, Planning Department
- 3.16 - Rock River Water Reclamation District
- 3.17 - Forest Preserves of Winnebago County

- 3.18 - Boone County Conservation District
- 3.19 - Winnebago County Soil & Water Conservation District
- 3.20 - Rockford Park District

NON-VOTING MEMBERS

- 3.21 - Illinois Environmental Protection Agency
- 3.22 - Illinois State Toll Highway Authority
- 3.23 - IDOT, Division of Public Transportation
- 3.24 - IDOT, Division of Urban Program Planning
- 3.25 - Ogle County Highway Dept.
- 3.26 - Boone County Council of Aging
- 3.27 - State Line Area Transportation Study
- 3.28 - Federal Highway Administration, IL Division
- 3.29 - Stateline Mass Transit District
- 3.30 - Rockford Metropolitan Agency for Planning

4. **MPO FY 2019 – FY 2022 TRANSPORTATION IMPROVEMENT PROGRAM (TIP) AMENDMENT - RMAP RESOLUTION 2018-15:** Amendment to the RMAP FY 2019-2022 TIP at the request of the City of Rockford and the Illinois Department of Transportation (IDOT) for the addition of projects and modification of existing projects. The MPO Technical Committee is asked for its recommendation of RMAP Resolution 2018-15.
5. **MPO PERFORMANCE MEASURES FOR PAVEMENT & BRIDGE CONDITION (PM2) AND PERFORMANCE OF THE NATIONAL HIGHWAY SYSTEM, FREIGHT MOVEMENT OF THE INTERSTATE SYSTEM - RMAP RESOLUTION 2018-16:** Discussion on the federally required performance measures categories from the FAST Act. Pavement & Bridge condition (PM2) and System Performance (PM3) performance targets must be established by the MPO no later than November 14th, 2018. The MPO Technical Committee is asked for its recommendation of RMAP Resolution 2018-16.
6. **MPO TITLE VI & ENVIRONMENTAL JUSTICE CONSIDERATIONS:** Discussion regarding the update to the MPO Title VI & Environmental Justice document.
7. **LONG-RANGE TRANSPORTATION PLAN (LRTP) UPDATE:** Discussion regarding the current planning efforts underway and the next steps for the LRTP update.



MPO TECHNICAL COMMITTEE
Thursday, January 17th, 2019 – 10:00am
City of Loves Park, City Hall – 100 Heart Blvd
~~-Revised Agenda-~~

AGENDA

1. APPROVAL OF THE OCTOBER 18th, 2018 MPO TECHNICAL COMMITTEE MEETING MINUTES
2. PUBLIC COMMENT

3. AGENCY REPORTS:

VOTING MEMBERS

- 3.01 - Illinois Dept. of Transportation, District 2
- 3.02 - Winnebago County Highway Department
- 3.03 - City of Rockford, Public Works Dept.
- 3.04 - City of Loves Park, Public Works Dept.
- 3.05 - Village of Machesney Park, Public Works
- 3.06 - Chicago/Rockford International Airport
- 3.07 - Rockford Mass Transit District
- 3.08 - City of Loves Park, Community Development Dept.
- 3.09 - Village of Machesney Park, Community Development Dept.
- 3.10 - City of Rockford, Community Development Dept.
- 3.11 - Winnebago County Planning and Economic Development Dept.
- 3.12 - Boone County, Planning Department
- 3.13 - Boone County Highway Dept.
- 3.14 - City of Belvidere, Public Works Dept.
- 3.15 - City of Belvidere, Planning Department
- 3.16 - Rock River Water Reclamation District
- 3.17 - Forest Preserves of Winnebago County

- 3.18 - Boone County Conservation District
- 3.19 - Winnebago County Soil & Water Conservation District
- 3.20 - Rockford Park District

NON-VOTING MEMBERS

- 3.21 - Illinois Environmental Protection Agency
- 3.22 - Illinois State Toll Highway Authority
- 3.23 - IDOT, Division of Public Transportation
- 3.24 - IDOT, Division of Urban Program Planning
- 3.25 - Ogle County Highway Dept.
- 3.26 - Boone County Council of Aging
- 3.27 - State Line Area Transportation Study
- 3.28 - Federal Highway Administration, IL Division
- 3.29 - Stateline Mass Transit District
- 3.30 - Rockford Metropolitan Agency for Planning

4. MPO FY 2019 – FY 2022 TRANSPORTATION IMPROVEMENT PROGRAM (TIP) AMENDMENT - MPO RESOLUTION 2019-1: Amendment to the MPO FY 2019-2022 TIP at the request of the Illinois Department of Transportation (IDOT) for the addition of projects. The MPO Technical Committee is asked for its recommendation of MPO Resolution 2019-1.
5. MPO TITLE VI & ENVIRONMENTAL JUSTICE CONSIDERATIONS AND LIMITED ENGLISH PROFICIENCY PLAN – MPO RESOLUTION 2019-2: Discussion regarding the final draft update to the MPO Title VI & Environmental Justice document and Limited English Proficiency Plan. Public comment period for the draft documents was from November 16th, 2018 – December 17th, 2018. The MPO Technical Committee is asked for its recommendation of MPO Resolution 2019-2.
6. MPO PERFORMANCE MEASURES FOR SAFETY PERFORMANCE TARGETS – MPO RESOLUTION 2019-3: Discussion regarding federally required performance measure categories from the FAST-Act. Safety performance measures targets must be established by the MPO no later than February 27th, 2019. The Technical Committee is asked for its recommendation of MPO Resolution 2019-3.
7. MPO PERFORMANCE MEASURES FOR TRANSIT ASSET MANAGEMENT TARGETS - MPO RESOLUTION 2019-4: Discussion regarding the federally required transit performance measures categories from the FAST Act. The MPO Technical Committee is asked for its recommendation of MPO Resolution 2019-4.

8. **SURFACE TRANSPORTATION BLOCK GRANT PROGRAM (STBG):** Discussion regarding annual STBG funding apportionments and funding projections for the metropolitan planning area.
9. **MPO METROPOLITAN TRANSPORTATION PLAN UPDATE:** Discussion regarding the current planning efforts underway and the next steps for the LRTP update.
10. **RMTD COMPREHENSIVE MOBILITY ANALYSIS:** Discussion regarding the current planning efforts underway and the next steps for the mobility analysis.
11. **PROGRESS REPORTS**
12. **OTHER BUSINESS**
13. **ADJOURNMENT**

Opportunities for public comment will be afforded on all agenda items.

Persons who require special accommodations under the Americans with Disabilities Act or persons who require translation services (free of charge) should contact the MPO at 815-319-4180 at least two working days before the need for such services or accommodations.



MPO TECHNICAL COMMITTEE
Thursday, February 21st, 2019 – 10:00am
City of Loves Park, City Hall – 100 Heart Blvd

AGENDA

1. APPROVAL OF THE JANUARY 17th, 2019 MPO TECHNICAL COMMITTEE MEETING MINUTES

2. PUBLIC COMMENT

3. AGENCY REPORTS:

VOTING MEMBERS

- 3.01 - Illinois Dept. of Transportation, District 2
- 3.02 - Winnebago County Highway Department
- 3.03 - City of Rockford, Public Works Dept.
- 3.04 - City of Loves Park, Public Works Dept.
- 3.05 - Village of Machesney Park, Public Works
- 3.06 - Chicago/Rockford International Airport
- 3.07 - Rockford Mass Transit District
- 3.08 - City of Loves Park, Community Development Dept.
- 3.09 - Village of Machesney Park, Community Development Dept.
- 3.10 - City of Rockford, Community Development Dept.
- 3.11 - Winnebago County Planning and Economic Development Dept.
- 3.12 - Boone County, Planning Department
- 3.13 - Boone County Highway Dept.
- 3.14 - City of Belvidere, Public Works Dept.
- 3.15 - City of Belvidere, Planning Department
- 3.16 - Rock River Water Reclamation District
- 3.17 - Forest Preserves of Winnebago County

- 3.18 - Boone County Conservation District
- 3.19 - Winnebago County Soil & Water Conservation District
- 3.20 - Rockford Park District

NON-VOTING MEMBERS

- 3.21 - Illinois Environmental Protection Agency
- 3.22 - Illinois State Toll Highway Authority
- 3.23 - IDOT, Division of Public Transportation
- 3.24 - IDOT, Division of Urban Program Planning
- 3.25 - Ogle County Highway Dept.
- 3.26 - Boone County Council of Aging
- 3.27 - State Line Area Transportation Study
- 3.28 - Federal Highway Administration, IL Division
- 3.29 - Stateline Mass Transit District
- 3.30 - RIPC Metropolitan Planning Organization

4. MPO FY 2019 - FY 2022 TRANSPORTATION IMPROVEMENT PROGRAM (TIP) AMENDMENT - MPO RESOLUTION 2019-5: Amendment to the MPO FY 2019-2022 TIP at the request of the Illinois Department of Transportation (IDOT) and the City of Rockford. The MPO Technical Committee is asked for its recommendation of MPO Resolution 2019-5.

5. MPO ALTERNATIVE TRANSPORTATION COMMITTEE BY-LAWS - MPO RESOLUTION 2019-6: Discussion regarding by-laws for the MPO Alternative Transportation Committee. The MPO Technical Committee is asked for its recommendation of MPO Resolution 2019-6.

6. CENSUS 2020 PARTICIPANT STATISTICAL AREAS PROGRAM (PSAP): Region 1 Planning Council has been invited to participate in the 2020 Census as part of the Participant Statistical Areas Program (PSAP) to review updates for selected statistical boundaries. Discussion regarding the PSAP Program, stakeholder roles, important dates, and Census proposed changes to selected census defined boundaries in Winnebago and Boone Counties.

7. MPO FY 2020 UNIFIED WORK PROGRAM (UWP): Discussion of the transportation planning work activities for next year's (July 1, 2019 to June 30, 2020) UWP.

8. **MPO METROPOLITAN TRANSPORTATION PLAN UPDATE:** Discussion regarding the current planning efforts underway and the next steps for the MTP update.
9. **RMTD COMPREHENSIVE MOBILITY ANALYSIS:** Discussion regarding the current planning efforts underway and the next steps for the mobility analysis.
10. **PROGRESS REPORTS**
11. **OTHER BUSINESS**
12. **ADJOURNMENT**

Opportunities for public comment will be afforded on all agenda items.

Persons who require special accommodations under the Americans with Disabilities Act or persons who require translation services (free of charge) should contact the MPO at 815-319-4180 at least two working days before the need for such services or accommodations.





MPO TECHNICAL COMMITTEE

Thursday, April 18, 2019 – 10:00am
City of Loves Park, City Hall – 100 Heart Blvd

AGENDA

1. **APPROVAL OF THE FEBRUARY 21st, 2019 MPO TECHNICAL COMMITTEE MEETING MINUTES**

2. **PUBLIC COMMENT**

3. **AGENCY REPORTS:**

VOTING MEMBERS

- 3.01 - Illinois Dept. of Transportation, District 2
- 3.02 - Winnebago County Highway Department
- 3.03 - City of Rockford, Public Works Dept.
- 3.04 - City of Loves Park, Public Works Dept.
- 3.05 - Village of Machesney Park, Public Works
- 3.06 - Chicago/Rockford International Airport
- 3.07 - Rockford Mass Transit District
- 3.08 - City of Loves Park, Community Development Dept.
- 3.09 - Village of Machesney Park, Community Development Dept.
- 3.10 - City of Rockford, Community Development Dept.
- 3.11 - Winnebago County Planning and Economic Development Dept.
- 3.12 - Boone County, Planning Department
- 3.13 - Boone County Highway Dept.
- 3.14 - City of Belvidere, Public Works Dept.
- 3.15 - City of Belvidere, Planning Department
- 3.16 - Rock River Water Reclamation District
- 3.17 - Forest Preserves of Winnebago County

- 3.18 - Boone County Conservation District
- 3.19 - Winnebago County Soil & Water Conservation District
- 3.20 - Rockford Park District

NON-VOTING MEMBERS

- 3.21 - Illinois Environmental Protection Agency
- 3.22 - Illinois State Toll Highway Authority
- 3.23 - IDOT, Division of Public Transportation
- 3.24 - IDOT, Division of Urban Program Planning
- 3.25 - Ogle County Highway Dept.
- 3.26 - Boone County Council of Aging
- 3.27 - State Line Area Transportation Study
- 3.28 - Federal Highway Administration, IL Division
- 3.29 - Stateline Mass Transit District
- 3.30 - R1PC Metropolitan Planning Organization

4. **MPO FY 2019 – FY 2022 TRANSPORTATION IMPROVEMENT PROGRAM (TIP) AMENDMENT - MPO RESOLUTION 2019-7:** Amendment to the MPO FY 2019-2022 TIP at the request of the Rockford Mass Transit District (RMTD) and the City of Rockford. The MPO Technical Committee is asked for its recommendation of **MPO Resolution 2019-7.**

5. **MPO FY 2020 UNIFIED WORK PROGRAM (UWP) – MPO RESOLUTION 2019-8:** Discussion of the transportation planning work activities for next year's (July 1, 2019 to June 30, 2020) UWP. A public comment and review period for the document was from March 15th, 2019 until April 15th, 2019. The MPO Technical Committee is asked for its recommendation of **MPO Resolution 2019-8.**

6. **CENSUS 2020 PARTICIPANT STATISTICAL AREAS PROGRAM (PSAP):** Region 1 Planning Council has been invited to participate in the 2020 Census as part of the Participant Statistical Areas Program (PSAP) to review updates for selected statistical boundaries. Discussion and update regarding the PSAP Program, stakeholder roles, important dates, and Census proposed changes to selected census defined boundaries in Winnebago and Boone Counties.

7. **MPO METROPOLITAN TRANSPORTATION PLAN UPDATE:** Discussion regarding the current planning efforts underway, preliminary scenario planning considerations, and the next steps for the MTP update.
8. **RMTD COMPREHENSIVE MOBILITY ANALYSIS:** Discussion regarding the current planning efforts underway and the next steps for the mobility analysis.
9. **PROGRESS REPORTS**
10. **OTHER BUSINESS**
11. **ADJOURNMENT**

Opportunities for public comment will be afforded on all agenda items.

Persons who require special accommodations under the Americans with Disabilities Act or persons who require translation services (free of charge) should contact the MPO at 815-319-4180 at least two working days before the need for such services or accommodations.





MPO TECHNICAL COMMITTEE

Thursday, June 20th, 2019 – 10:00am
City of Loves Park, City Hall – 100 Heart Blvd

AGENDA

1. APPROVAL OF THE APRIL 18th, 2019 MPO TECHNICAL COMMITTEE MEETING MINUTES

2. PUBLIC COMMENT

3. AGENCY REPORTS:

VOTING MEMBERS

- 3.01 - Illinois Dept. of Transportation, District 2
- 3.02 - Winnebago County Highway Department
- 3.03 - City of Rockford, Public Works Dept.
- 3.04 - City of Loves Park, Public Works Dept.
- 3.05 - Village of Machesney Park, Public Works
- 3.06 - Chicago/Rockford International Airport
- 3.07 - Rockford Mass Transit District
- 3.08 - City of Loves Park, Community Development Dept.
- 3.09 – Village of Machesney Park, Community Development Dept.
- 3.10 - City of Rockford, Community Development Dept.
- 3.11 - Winnebago County Planning and Economic Development Dept.
- 3.12 – Boone County, Planning Department
- 3.13 - Boone County Highway Dept.
- 3.14 - City of Belvidere, Public Works Dept.
- 3.15 – City of Belvidere, Planning Department
- 3.16 - Rock River Water Reclamation District
- 3.17 - Forest Preserves of Winnebago County

- 3.18 - Boone County Conservation District
- 3.19 - Winnebago County Soil & Water Conservation District
- 3.20 - Rockford Park District

NON-VOTING MEMBERS

- 3.21 – Illinois Environmental Protection Agency
- 3.22 – Illinois State Toll Highway Authority
- 3.23 – IDOT, Division of Public Transportation
- 3.24 – IDOT, Division of Urban Program Planning
- 3.25 – Ogle County Highway Dept.
- 3.26 – Boone County Council of Aging
- 3.27 – State Line Area Transportation Study
- 3.28 – Federal Highway Administration, IL Division
- 3.29 – Stateline Mass Transit District
- 3.30 – R1PC Metropolitan Planning Organization

4. MPO FY 2019 – FY 2022 TRANSPORTATION IMPROVEMENT PROGRAM (TIP) AMENDMENT - MPO RESOLUTION 2019-9: Amendment to the MPO FY 2019-2022 TIP at the request of the Rockford Mass Transit District (RMTD), the City of Rockford, Winnebago County Highway Department, and the Illinois Department of Transportation (IDOT). The MPO Technical Committee is asked for its recommendation of **MPO Resolution 2019-9**.

5. MPO METROPOLITAN TRANSPORTATION PLAN UPDATE: Discussion regarding the current planning efforts underway, preliminary scenario planning considerations, draft MTP goals, and the next steps for the MTP update.

6. RMTD COMPREHENSIVE MOBILITY ANALYSIS: Discussion regarding the current planning efforts underway and the next steps for the mobility analysis.





RMAP POLICY COMMITTEE

Thursday, June 28, 2018 – 1:00pm

Regional Design Center – 315 N Main Street, Rockford

AGENDA

1. **CALL TO ORDER, ROLL CALL AND REPRESENTATION**
 - City of Belvidere
 - City of Loves Park
 - Boone County
 - Village of Machesney Park
 - City of Rockford
 - Winnebago County
 - Rockford Mass Transit District (RMTD)
 - Illinois Department of Transportation, Region 2
2. **PUBLIC COMMENT**
3. **APPROVAL OF THE MAY 3, 2018 RMAP POLICY COMMITTEE MEETING MINUTES**
4. **MPO TRANSPORTATION ALTERNATIVES PROGRAM (TAP) – RMAP RESOLUTION 2018-II:** Discussion and possible approval of the Transportation Alternative Program projects submitted to the MPO. A competitive call for projects was held from April 5th and May 11th, 2018. This resolution also amends the current FY 2018-FY 2021 TIP. The RMAP Technical Committee unanimously endorsed this resolution at their June 21, 2018 meeting.
5. **RMAP FY2018-FY2021 TRANSPORTATION IMPROVEMENT PROGRAM (TIP) AMENDMENT – RMAP RESOLUTION 2018-12:** Discussion and possible approval of the amendment to the RMAP FY 2018-FY 2021 TIP at the request of the Rockford Mass Transit District for the addition of projects and modification of existing projects. The RMAP Technical Committee unanimously endorsed this resolution at their June 21, 2018 meeting.
6. **PROGRESS REPORTS**
 - a) Long-Range Transportation Plan (LRTP) update
 - b) MPO Performance Measures update
7. **OTHER BUSINESS**
8. **ADJOURNMENT**

Opportunities for public comment will be afforded on all agenda items.

Persons who require special accommodations under the Americans with Disabilities Act or persons who require translation services (free of charge) should contact RMAP at 815-319-4180 at least two working days before the need for such services or accommodations.

313 N. Main Street Rockford, Illinois 61101 R1planning.org p 815.319.4180

Winnebago County / Boone County / City of Rockford / City of Belvidere / City of Loves Park / Village of Machesney Park /
Rockford Mass Transit District / IDOT District #2



MPO POLICY COMMITTEE

Thursday, December 13th, 2018 – 1:00pm

Regional Design Center – 315 N Main Street, Rockford

AGENDA

1. **CALL TO ORDER, ROLL CALL AND REPRESENTATION**
 - City of Belvidere
 - City of Loves Park
 - Boone County
 - Village of Machesney Park
 - City of Rockford
 - Winnebago County
 - Rockford Mass Transit District (RMTD)
 - Illinois Department of Transportation, Region 2
2. **PUBLIC COMMENT**
3. **APPROVAL OF THE OCTOBER 25, 2018 MPO POLICY COMMITTEE MEETING MINUTES**
4. **MPO METROPOLITAN TRANSPORTATION PLAN (MTP):** Discussion regarding the development process of the regional Metropolitan Transportation Plan. Public workshops to gather comment regarding transportation system needs will be held at the end of January 2019. Additionally, a public survey is currently available on the RPC website. The initial public comment period is from December 10th, 2018 – February 15th, 2019. Periodic updates will be provided to the MPO Policy Committee as development of the plan continues.
5. **MPO TITLE VI & ENVIRONMENTAL JUSTICE (EJ) CONSIDERATIONS:** Discussion regarding the update to the MPO Title VI & EJ Considerations document. This is a federally required transportation planning document that must be updated every three years. The draft document has been made available on the MPO website. Public comment on the document is from November 16th, 2018 – December 17th, 2018.
6. **PROGRESS REPORTS**
7. **OTHER BUSINESS**
8. **ADJOURNMENT**

Opportunities for public comment will be afforded on all agenda items.

Persons who require special accommodations under the Americans with Disabilities Act or persons who require translation services (free of charge) should contact RPC at 815-319-4180 at least two working days before the need for such services or accommodations.



MPO POLICY COMMITTEE

Thursday, February 28th, 2019 – 12:45pm

Regional Design Center – 315 N Main Street, Rockford

AGENDA

1. **CALL TO ORDER, ROLL CALL AND REPRESENTATION**
 - City of Belvidere
 - City of Loves Park
 - Boone County
 - Village of Machesney Park
 - City of Rockford
 - Winnebago County
 - Rockford Mass Transit District (RMTD)
 - Illinois Department of Transportation, Region 2
2. **PUBLIC COMMENT**
3. **APPROVAL OF THE DECEMBER 13, 2018 MPO POLICY COMMITTEE MEETING MINUTES**
4. **MPO FY 2019 – FY 2022 TRANSPORTATION IMPROVEMENT PROGRAM (TIP) AMENDMENT – MPO RESOLUTION 2019-1:** Amendment to the MPO FY 2019-2022 TIP at the request of the Illinois Department of Transportation (IDOT) for the addition of projects. This resolution was unanimously endorsed by the MPO Technical Committee at their 1/17/2019 meeting. The MPO Policy Committee is asked for its adoption of MPO Resolution 2019-1.
5. **MPO TITLE VI & ENVIRONMENTAL JUSTICE CONSIDERATIONS AND LIMITED ENGLISH PROFICIENCY PLAN – MPO RESOLUTION 2019-2:** Discussion regarding the final draft update to the MPO Title VI & Environmental Justice document and Limited English Proficiency Plan. Public comment period for the draft documents was from November 16th, 2018 – December 17th, 2018. This resolution was unanimously endorsed by the MPO Technical Committee at their 1/17/2019 meeting. The MPO Policy Committee is asked for its adoption of MPO Resolution 2019-2.
6. **MPO PERFORMANCE MEASURES FOR SAFETY PERFORMANCE TARGETS – MPO RESOLUTION 2019-3:** Discussion regarding federally required performance measure categories from the FAST-Act. Safety performance measures targets must be established by the MPO no later than February 27th, 2019. This resolution was unanimously endorsed by the MPO Technical Committee at their 1/17/2019 meeting. The MPO Policy Committee is asked for its adoption of MPO Resolution 2019-3.
7. **MPO PERFORMANCE MEASURES FOR TRANSIT ASSET MANAGEMENT TARGETS - MPO RESOLUTION 2019-4:** Discussion regarding the federally required transit performance measures categories from the FAST Act. This resolution was unanimously endorsed by the MPO Technical Committee at their 1/17/2019 meeting. The MPO Policy Committee is asked for its adoption of MPO Resolution 2019-4.

313 N Main St, Rockford, IL 61101 | 815-319-4180 | info@r1planning.org

www.r1planning.org





MPO POLICY COMMITTEE

Thursday, May 9th, 2019 – 12:45pm
Regional Design Center – 315 N Main Street, Rockford

AGENDA

1. **CALL TO ORDER, ROLL CALL AND REPRESENTATION**
 - City of Belvidere
 - City of Rockford
 - City of Loves Park
 - Winnebago County
 - Boone County
 - Rockford Mass Transit District (RMTD)
 - Village of Machesney Park
 - Illinois Department of Transportation, Region 2
2. **PUBLIC COMMENT**
3. **APPROVAL OF THE FEBRUARY 28th, 2019 MPO POLICY COMMITTEE MEETING MINUTES**
4. **MPO FY 2019 – FY 2022 TRANSPORTATION IMPROVEMENT PROGRAM (TIP) AMENDMENT – MPO RESOLUTION 2019-7:** Amendment to the MPO FY 2019-2022 TIP at the request of the Rockford Mass Transit District (RMTD) and the City of Rockford for the addition of projects and modification of existing projects. This resolution was unanimously endorsed by the MPO Technical Committee at their 4/18/2019 meeting. The MPO Policy Committee is asked for its adoption of MPO Resolution 2019-7.
5. **MPO FY 2020 UNIFIED WORK PROGRAM – MPO RESOLUTION 2019-8:** Discussion of the transportation planning work activities for next year’s (July 1, 2019 to June 30, 2020) UWP. Public comment period for the draft document was from March 15th, 2019 – April 15th, 2019. This resolution was unanimously endorsed by the MPO Technical Committee at their 4/18/2019 meeting. The MPO Policy Committee is asked for its adoption of MPO Resolution 2019-8.
6. **CENSUS 2020 PARTICIPANT STATISTICAL AREAS PROGRAM (PSAP):** Updates regarding the PSAP Program, stakeholder roles, and Census proposed changes to selected census defined boundaries in Winnebago and Boone Counties.
7. **MPO METROPOLITAN TRANSPORTATION PLAN:** Updates regarding the current planning efforts underway, preliminary scenario planning considerations, and the next steps for the MTP update.
8. **RMTD COMPREHENSIVE MOBILITY ANALYSIS:** Updates regarding the current planning efforts underway and the next steps for the mobility analysis.
9. **PROGRESS REPORTS**
10. **OTHER BUSINESS**
11. **ADJOURNMENT**

Opportunities for public comment will be afforded on all agenda items.

Persons who require special accommodations under the Americans with Disabilities Act or persons who require translation services (free of charge) should contact R1PC at 815-319-4180 at least two working days before the need for such services or accommodations.

313 N Main St, Rockford, IL 61101 | 815-319-4180 | info@r1planning.org

www.r1planning.org





MPO POLICY COMMITTEE

Thursday, June 27th, 2019 – 12:45pm
Regional Design Center – 315 N Main Street, Rockford

AGENDA

1. **CALL TO ORDER, ROLL CALL AND REPRESENTATION**
 - City of Belvidere
 - City of Loves Park
 - Boone County
 - Village of Machesney Park
 - City of Rockford
 - Winnebago County
 - Rockford Mass Transit District (RMTD)
 - Illinois Department of Transportation, Region 2
2. **PUBLIC COMMENT**
3. **APPROVAL OF THE MAY 9th, 2019 MPO POLICY COMMITTEE MEETING MINUTES**
4. **MPO FY 2019 – FY 2022 TRANSPORTATION IMPROVEMENT PROGRAM (TIP) AMENDMENT – MPO RESOLUTION 2019-9:** Amendment to the MPO FY 2019-2022 TIP at the request of the Rockford Mass Transit District (RMTD), City of Rockford, Winnebago County Highway Department, and the Illinois Department of Transportation (IDOT) for the addition of projects and modification of existing projects. This resolution was unanimously endorsed by the MPO Technical Committee at their 6/20/2019 meeting. The MPO Policy Committee is asked for its adoption of MPO Resolution 2019-9.
5. **MPO METROPOLITAN TRANSPORTATION PLAN:** Discussion regarding the current planning efforts underway, preliminary scenario planning considerations, draft MTP goals, and the next steps for the MTP update.
6. **RMTD COMPREHENSIVE MOBILITY ANALYSIS:** Updates regarding the current planning efforts underway and the next steps for the mobility analysis.
7. **ELECTION OF OFFICERS**
8. **PROGRESS REPORTS**
9. **OTHER BUSINESS**
10. **ADJOURNMENT**

Opportunities for public comment will be afforded on all agenda items.

Persons who require special accommodations under the Americans with Disabilities Act or persons who require translation services (free of charge) should contact R1PC at 815-319-4180 at least two working days before the need for such services or accommodations.

313 N Main St, Rockford, IL 61101 | 815-319-4180 | info@r1planning.org

www.r1planning.org





R1PC Board Meeting

Thursday, February 28, 2019, 1:30 PM

Regional Design Center
315 North Main Street – Rockford, IL 61101

Agenda

Members: Boone County, Chicago Rockford International Airport, City of Belvidere, City of Loves Park, City of Rockford, ComEd, Growth Dimensions, Highland Community College, Nicor, Northern Illinois University – Rockford, North Park Water, Northwest Illinois Development Alliance, Rockford Area Economic Development Council, Rockford Park District, Rock River Water Reclamation District, Rock Valley College, Village of Cherry Valley, Village of Machesney Park, Winnebago County, The Workforce Connection; City of Rochelle, City of South Beloit, Rochelle Economic Development, Rockford Mass Transit District, Stephenson County, Village of Poplar Grove

1. Call to Order
2. Roll Call
3. Public Comment
4. Approval of Meeting Minutes
 - A. December 13, 2018
5. Items Presented for Information and Discussion
 - A. National Association of Regional Councils, Future Federal & State Funding – Mayor Chamberlain & Michael Dunn Jr.
 - B. Coyote nuisance – Coordination of public information – Machesney Park
 - C. Committee Reports
 - i. Land Bank
 - ii. Workforce Development Report – Doug Jensen
 - iii. Environmental Committee
 - iv. Focused Deterrence/ICJIA
 - v. MPO Policy Committee
 - vi. Program & Fund Development
 - vii. Economic Development
 - D. Executive Director’s Report
 - i. Financial Update – 2nd Quarter Statement of Activity
6. Action Items
 - A. Financial Policy
7. Other Business
8. Adjournment

Opportunities for public comment will be afforded on all agenda items.

Persons who require special accommodations under the Americans with Disabilities Act or persons who require translation services (free of charge) should contact the Region 1 Planning Council at 815-319-4180 at least two

313 N Main St, Rockford, IL 61101 | 815-319-4180 | info@r1planning.org

www.r1planning.org



RPC Board Meeting
Thursday, June 27, 2019, 1:30 PM
Regional Design Center
315 North Main Street – Rockford

Agenda

Members: Boone County, Chicago Rockford International Airport, City of Belvidere, City of Loves Park, City of Rockford, ComEd, Growth Dimensions, Highland Community College, Nicor, Northern Illinois University – Rockford, North Park Water, Northwest Illinois Development Alliance, Rockford Area Economic Development Council, Rockford Park District, Rock River Water Reclamation District, Rock Valley College, Village of Cherry Valley, Village of Machesney Park, Winnebago County, The Workforce Connection, City of Rochelle, City of South Beloit, Rochelle Economic Development, Rockford Mass Transit District, Stephenson County, Village of Poplar Grove

- Call to Order
- Roll Call
- Public Comment
- Approval of Meeting Minutes
 - May 9, 2019
- Action Items
 - Adoption of a Budget for Fiscal Year 2020
- Items Presented for Information and Discussion
 - Guest Presentation
 - 2050 Metropolitan Transportation Plan
 - Staff Reports
 - Coyote Initiative Status Update
 - 2020 Census Count Committee
 - Executive Director’s report
- Other Business
- Adjournment

Opportunities for public comment will be provided at all meetings of this public body. Persons who require special accommodations under the Americans with Disabilities Act or persons who require translation services (free of charge) should contact the Region 1 Planning Council at 815-319-4180 at least two working days before the need for such services or accommodations.

THIS PAGE INTENTIONALLY LEFT BLANK.

MPO PLANNING STAFF

MICHAEL DUNN

Executive Director

JON PAUL DIPLA, AICP

Director of Metropolitan Planning Organization

SYDNEY TURNER

Metro Program Manager

COLIN BELLE

Transportation Systems Planner

MARGARET CAMPBELL

Metropolitan Planner

BRANDON GEBER

Metropolitan Transit Planner

CHUCK KLUTHO

Metropolitan Planner

ALAN MILLS

Land Use Planner

ONLINE RESOURCES

Region 1 Planning Council Website

<http://r1planning.org>

2050 Metropolitan Transportation Plan Webpage

<http://r1planning.org/mtp>

Transportation for Tomorrow (2040): A Long Range Transportation Plan for the Rockford Region

<http://r1planning.org/fundamentals>



COLLABORATIVE PLANNING FOR NORTHERN ILLINOIS

313 N Main St, Rockford, IL 61101 | 815-319-4180 | info@r1planning.org
www.r1planning.org